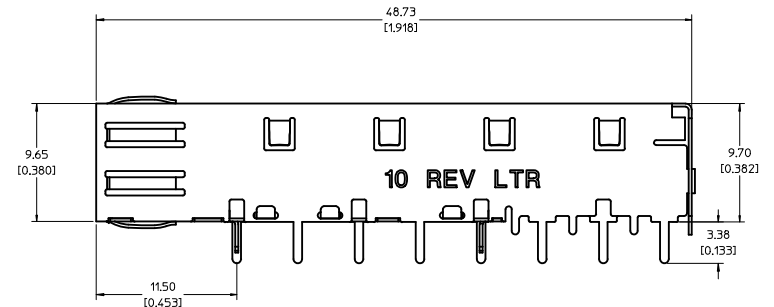
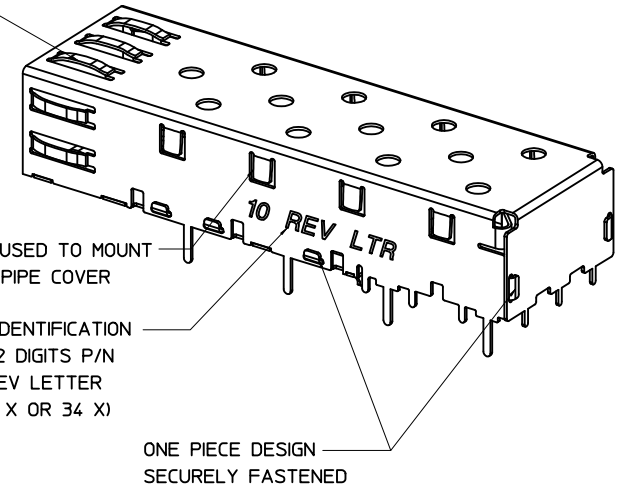


SPRING FINGER GASKET WITH TWO POINTS OF CONTACT. COMPLIES WITH (SFP) MSA BOARD AND BEZEL LOCATIONS.



MOLEX PN	PLATING
747370010	PRE-PLATED WITH NICKEL
747370034	POST PLATED WITH MATTE TIN

NOTES:

1. THIS CAGE IS FOR SINGLE SIDED USE ONLY.

2. CAN BE USED WITH THE FOLLOWING LIGHT PIPE PART NUMBERS:

747260001 - LIGHT PIPE FROM BACK TO TOP  
(REFER TO DOCUMENT SD-74726-001)

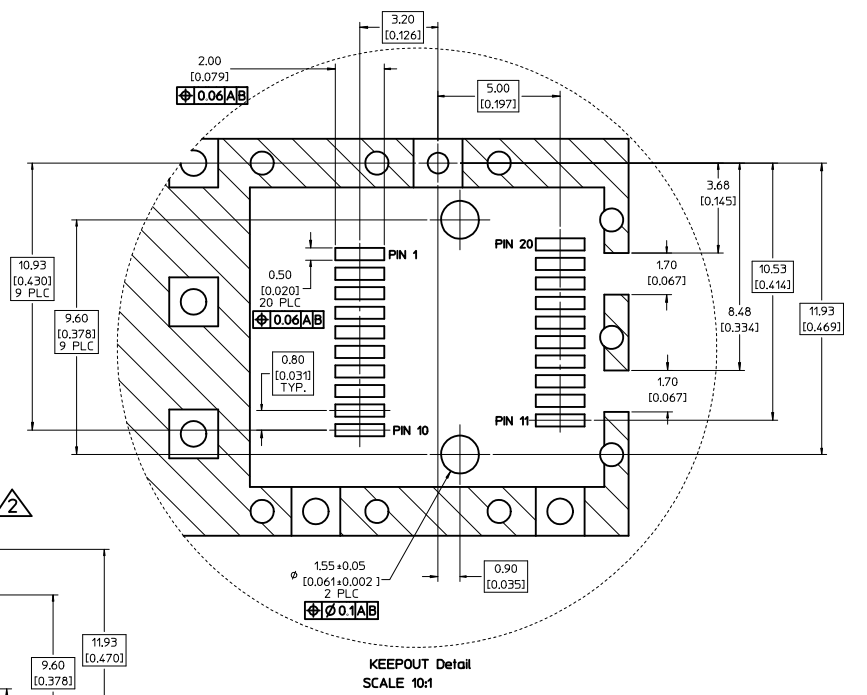
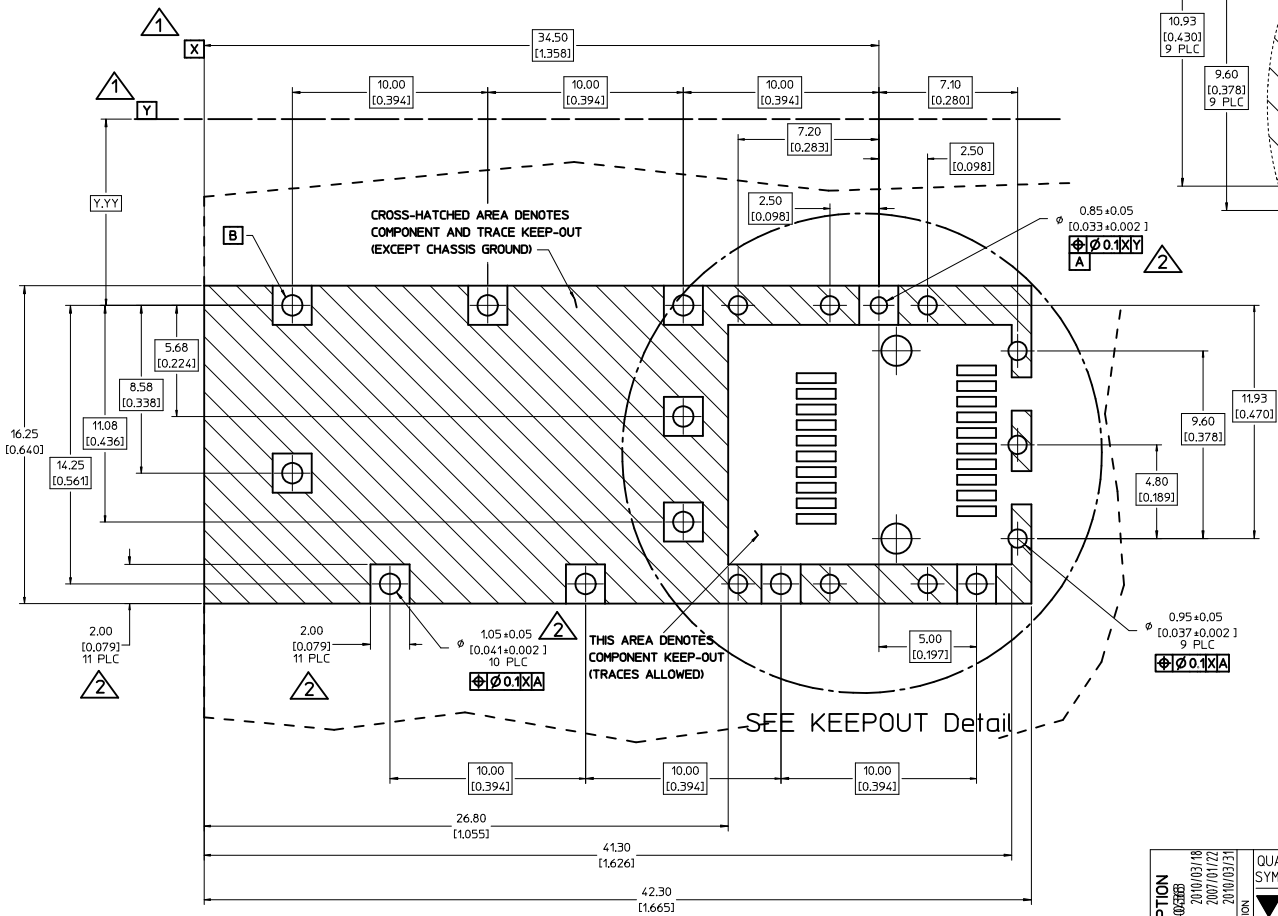
747260002 - LIGHT PIPE FROM SIDE TO TOP  
(REFER TO DOCUMENT SD-74726-002)

3. MATERIAL: COPPER ALLOY

4. THIS PART MEETS THE RESTRICTION OF HAZARDOUS SUBSTANCES IN ELECTRICAL AND ELECTRONIC EQUIPMENT (ROHS) DIRECTIVE (2002/95/EC).

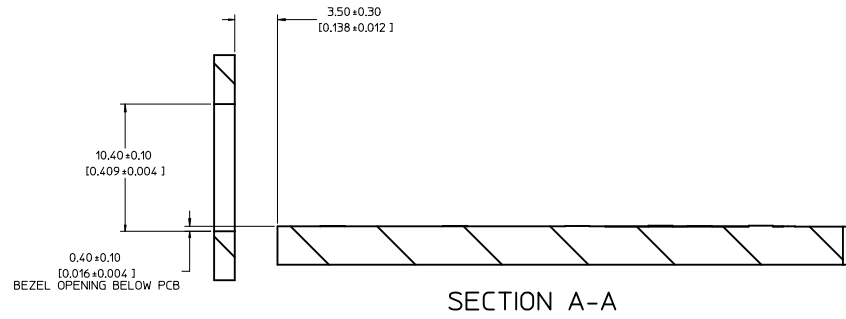
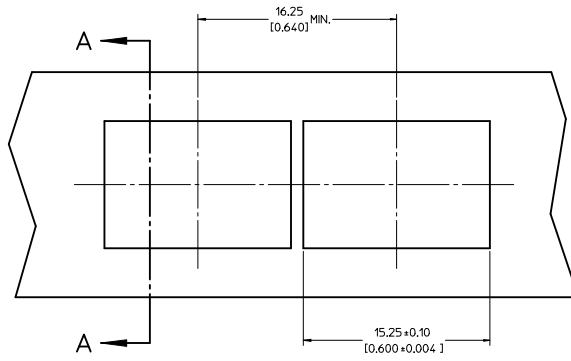
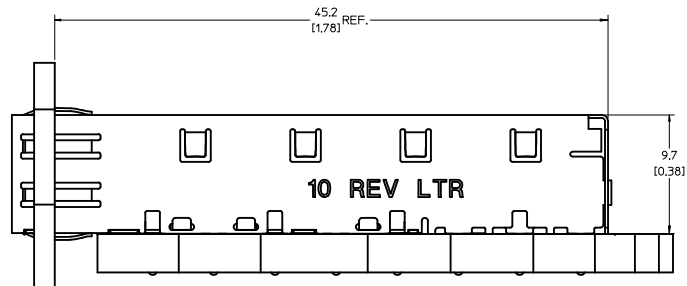
<b>ADDED TIN OPTION</b> EC NO: USY2007-023885 DRAWN: MCKERVEY 2010/03/18 CHECKED: RMAHMOOD 2007/01/22 APPROVED: KJANOTA 2010/03/31	QUALITY SYMBOLS ▽=0 ▽=0	GENERAL TOLERANCES (UNLESS SPECIFIED): <table border="1"> <thead> <tr> <th></th> <th>mm</th> <th>INCH</th> </tr> </thead> <tbody> <tr> <td>4 PLACES</td> <td>±.005</td> <td>±.0005</td> </tr> <tr> <td>3 PLACES</td> <td>±.005</td> <td>±.0005</td> </tr> <tr> <td>2 PLACES</td> <td>±0.13</td> <td>±.01</td> </tr> <tr> <td>1 PLACE</td> <td>±0.25</td> <td>±.01</td> </tr> </tbody> </table> ANGULAR ± 1°		mm	INCH	4 PLACES	±.005	±.0005	3 PLACES	±.005	±.0005	2 PLACES	±0.13	±.01	1 PLACE	±0.25	±.01	DIMENSION STYLE <b>MM/IN</b>	SCALE <b>5:1</b>	DESIGN UNITS <b>METRIC</b>	THIRD ANGLE PROJECTION
		mm	INCH																		
	4 PLACES	±.005	±.0005																		
	3 PLACES	±.005	±.0005																		
2 PLACES	±0.13	±.01																			
1 PLACE	±0.25	±.01																			
DRAWN BY CCOX 2007/01/22	CHECKED BY RMAHMOOD 2007/01/22	APPROVED BY KJANOTA 2010/03/31	MATERIAL NO. <b>SEE CHART</b>	DOCUMENT NO. <b>SD-74737-010</b>	TITLE <b>SFP ONE PIECE CAGE W/SPRING FINGERS SOLDER POSTS</b>	SHEET NO. <b>1 OF 4</b>															
DRAFT WHERE APPLICABLE MUST REMAIN WITHIN DIMENSIONS						MOLEX INCORPORATED															
THIS DRAWING CONTAINS INFORMATION THAT IS PROPRIETARY TO MOLEX INCORPORATED AND SHOULD NOT BE USED WITHOUT WRITTEN PERMISSION						MOLEX INCORPORATED															

- 1 DATUM AND BASIC DIMENSIONS ESTABLISHED BY CUSTOMER.
- 2 PADS AND VIAS ARE CHASSIS GROUND.
- 3 HOLE LAYOUT SHOWN IS FOR SINGLE SIDED MOUNTING ONLY.
- 4 CONNECTOR PAD LAYOUT PER SFP MSA, WILL ACCOMMODATE MOLEX CONNECTOR SERIES 74441 OR EQUIVALENT.



<b>ADDED TIN OPTION</b> EC NO: USY2007-00366 DRAWN BY: MCKEVEY 2010/03/18 CHECKED BY: CHYKORAHMOOD 2007/01/22 APPR-K: JANOTA 2010/03/31 REV: DESCRIPTION	QUALITY SYMBOLS ▽=0 ▽=0	GENERAL TOLERANCES (UNLESS SPECIFIED) DIMENSION STYLE: MM/IN SCALE: 8:1 DESIGN UNITS: METRIC THIRD ANGLE PROJECTION	DRAWN BY: CCOX DATE: 2007/01/22 CHECKED BY: RMAHMOOD DATE: 2007/01/22 APPROVED BY: KJANOTA DATE: 2010/03/31 MATERIAL NO: SEE CHART DOCUMENT NO: SD-74737-010	TITLE: SFP ONE PIECE CAGE W/SPRING FINGERS SOLDER POSTS MOLEX INCORPORATED SHEET NO: 2 OF 4
	DRAFT WHERE APPLICABLE MUST REMAIN WITHIN DIMENSIONS	SIZE: D	THIS DRAWING CONTAINS INFORMATION THAT IS PROPRIETARY TO MOLEX INCORPORATED AND SHOULD NOT BE USED WITHOUT WRITTEN PERMISSION	

20 19 18 17 16 15 14 13 12 11 10 9 8 7 6 5 4 3 2 1



<b>ADDED TIN OPTION</b> EC NO: USY2007-00688 D: DRWN:MKC/REV: 2010/03/18 CHK:RMAHMOOD 2007/01/22 APPR:K.JANOTA 2010/03/31	QUALITY SYMBOLS ▽=0 ▽=0	GENERAL TOLERANCES (UNLESS SPECIFIED) <table border="1"> <tr> <th></th> <th>mm</th> <th>INCH</th> </tr> <tr> <td>4 PLACES</td> <td>±---</td> <td>±---</td> </tr> <tr> <td>3 PLACES</td> <td>±---</td> <td>±.005</td> </tr> <tr> <td>2 PLACES</td> <td>±0.13</td> <td>±.01</td> </tr> <tr> <td>1 PLACE</td> <td>±0.25</td> <td>±---</td> </tr> </table> ANGULAR ± 1°		mm	INCH	4 PLACES	±---	±---	3 PLACES	±---	±.005	2 PLACES	±0.13	±.01	1 PLACE	±0.25	±---	DIMENSION STYLE <b>MM/IN</b>	SCALE <b>5:1</b>	DESIGN UNITS <b>METRIC</b>	THIRD ANGLE PROJECTION
		mm	INCH																		
	4 PLACES	±---	±---																		
	3 PLACES	±---	±.005																		
2 PLACES	±0.13	±.01																			
1 PLACE	±0.25	±---																			
DRAWN BY CCOX	DATE 2007/01/22	CHECKED BY RMAHMOOD	DATE 2007/01/22	APPROVED BY K.JANOTA	DATE 2010/03/31	TITLE <b>SFP ONE PIECE CAGE W/SPRING FINGERS SOLDER POSTS</b>															
MATERIAL NO. <b>SEE CHART</b>		DOCUMENT NO. <b>SD-74737-010</b>		MOLEX INCORPORATED		SHEET NO. 3 OF 4															
DRAFT WHERE APPLICABLE MUST REMAIN WITHIN DIMENSIONS							THIS DRAWING CONTAINS INFORMATION THAT IS PROPRIETARY TO MOLEX INCORPORATED AND SHOULD NOT BE USED WITHOUT WRITTEN PERMISSION														

19 18 17 16 15 14 13 12 11 10 9 8 7 6 5 4 3 2 1

DATE	REV	CHANGES
2007/01/17	A	INITIAL RELEASE
2007/01/24	B	[1] ON SHT1 ADDED TEXT TO ISO VIEW & SIDE VIEW, [2] ON SHT3 DELETED BEZ FRONT VIEW
2007/04/25	C	[1] ADDED REV SHEET, [2] UPDATED REV SHEET NOTES A-B, [3] UPDATED DRAWING TO REFLECT CHG'S MADE TO EM-74737-010-ASSY REV C, [4] ON SHT1 ROTATED BTM VIEW 180 DEGREES.
2010/03/18	D	[1] ADDED PLATING CHART ON SHT1 WITH TIN AND NICKEL OPTION, [2] REMOVED PLATING CALLOUT FROM NOTE 3, [3] CHANGED MATERIAL NO. TO 'SEE CHART'

ADDED TIN OPTION EC NO: USY2007-0038B DRAWN: MCKERVEY 2010/03/18 CHECKED: RMAHMOOD 2007/01/22 APPR: K JANOTA 2010/03/31	QUALITY SYMBOLS	GENERAL TOLERANCES (UNLESS SPECIFIED)	DIMENSION STYLE	SCALE	DESIGN UNITS	THIRD ANGLE PROJECTION														
	=0 =0	<table border="1"> <tr> <th></th> <th>mm</th> <th>INCH</th> </tr> <tr> <td>4 PLACES</td> <td>± .005</td> <td>± .0005</td> </tr> <tr> <td>3 PLACES</td> <td>± .01</td> <td>± .001</td> </tr> <tr> <td>2 PLACES</td> <td>± 0.13</td> <td>± .01</td> </tr> <tr> <td>1 PLACE</td> <td>± 0.25</td> <td>± .01</td> </tr> </table> ANGULAR ± 1°		mm	INCH	4 PLACES	± .005	± .0005	3 PLACES	± .01	± .001	2 PLACES	± 0.13	± .01	1 PLACE	± 0.25	± .01	MM/IN 1:1	METRIC	☉
		mm	INCH																	
	4 PLACES	± .005	± .0005																	
3 PLACES	± .01	± .001																		
2 PLACES	± 0.13	± .01																		
1 PLACE	± 0.25	± .01																		
DRAWN BY: CCOX CHECKED BY: RMAHMOOD APPROVED BY: K JANOTA	DATE: 2007/01/22 DATE: 2007/01/22 DATE: 2010/03/31	TITLE: SFP ONE PIECE CAGE W/SPRING FINGERS SOLDER POSTS MOLEX INCORPORATED	MATERIAL NO: SEE CHART DOCUMENT NO: SD-74737-010	SHEET NO: 4 OF 4																
SIZE: D THIS DRAWING CONTAINS INFORMATION THAT IS PROPRIETARY TO MOLEX INCORPORATED AND SHOULD NOT BE USED WITHOUT WRITTEN PERMISSION	DRAFT WHERE APPLICABLE MUST REMAIN WITHIN DIMENSIONS																			