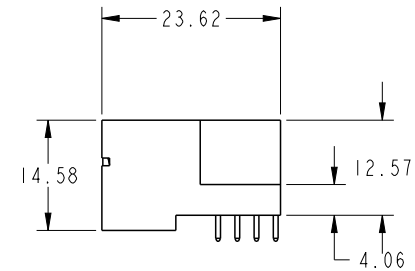
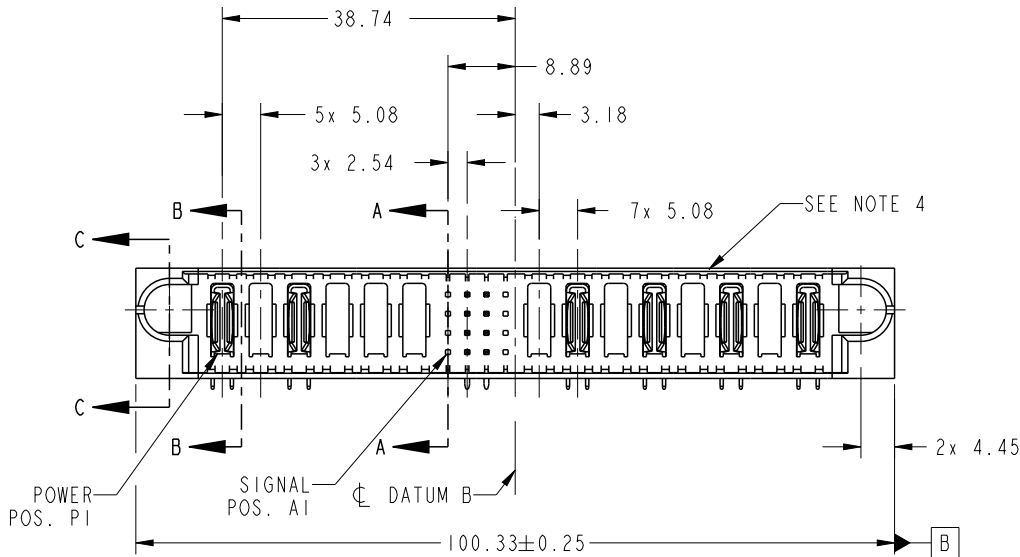


PRODUCT NO.	ROWS	POWER						SIGNAL				POWER						E2							
		E1	P1	P2	P3	P4	P5	P6	1	2	3	4	P7	P8	P9	P10	P11		P12	P13	P14				
51939-734-- NOTE 3	D C B A		PA	X	PA	X	X	X	X	U	H	X	T	T	X	X	X	S	S	X	X	R	R	X	

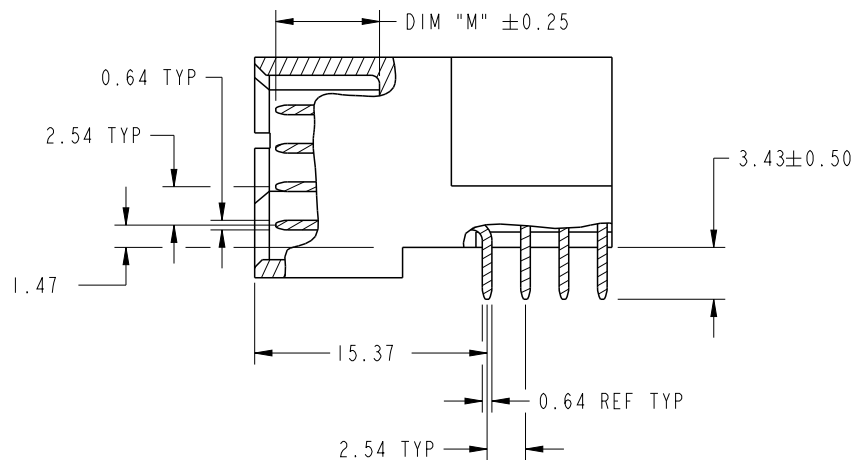


CODE	DIM "M" MATING LENGTH	CONTACT TYPE
U	[6.86]	SIGNAL
T	[6.86]	SIGNAL
S	[6.86]	SIGNAL
R	[6.86]	SIGNAL
H	[5.59]	SIGNAL
PA	[N/A]	POWER
X	OMITTED	OMITTED

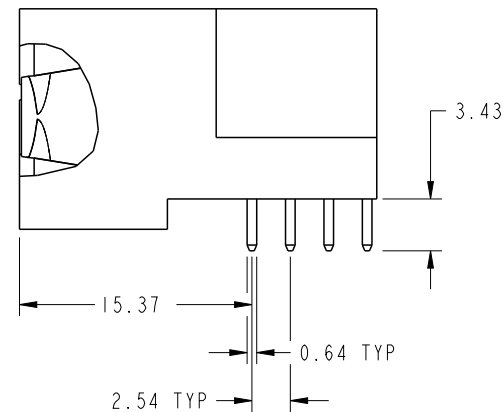
spec ref	*	dr	Luo Weller	2013/01/23	projection 	MM ←→	size	A4	scale	1:1		
tolerance std	TOLERANCES UNLESS OTHERWISE SPECIFIED	eng	Luo Weller	2014/07/23			product family	PwrBlade	ecn no	-	rel level	Released
SEE NOTE		chr	-	-				appr	Pei-Ming Zheng	2014/07/23		
surface	✓	linear	0.X	±0.5	 www.fci.com	title 6P + 16S + 8P RIGHT ANGLE SOLDER HEADER	surface linear	0.XX	±0.25	dwg no 51939-734	rev A	
		0.XXX	±0.1									
		angular	0°	±2°								
		cat. no.		-	Product - Customer Drw			sheet 1 of 4				

PRODUCT NUMBER

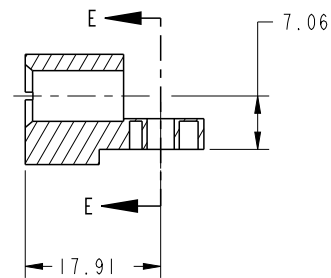
51939-734--
NOTE: 3



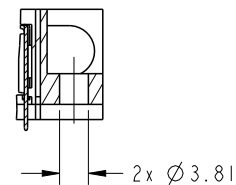
BROKEN-OUT SECTION A-A
SCALE 2:1



BROKEN-OUT SECTION B-B
SCALE 2:1



SECTION C-C

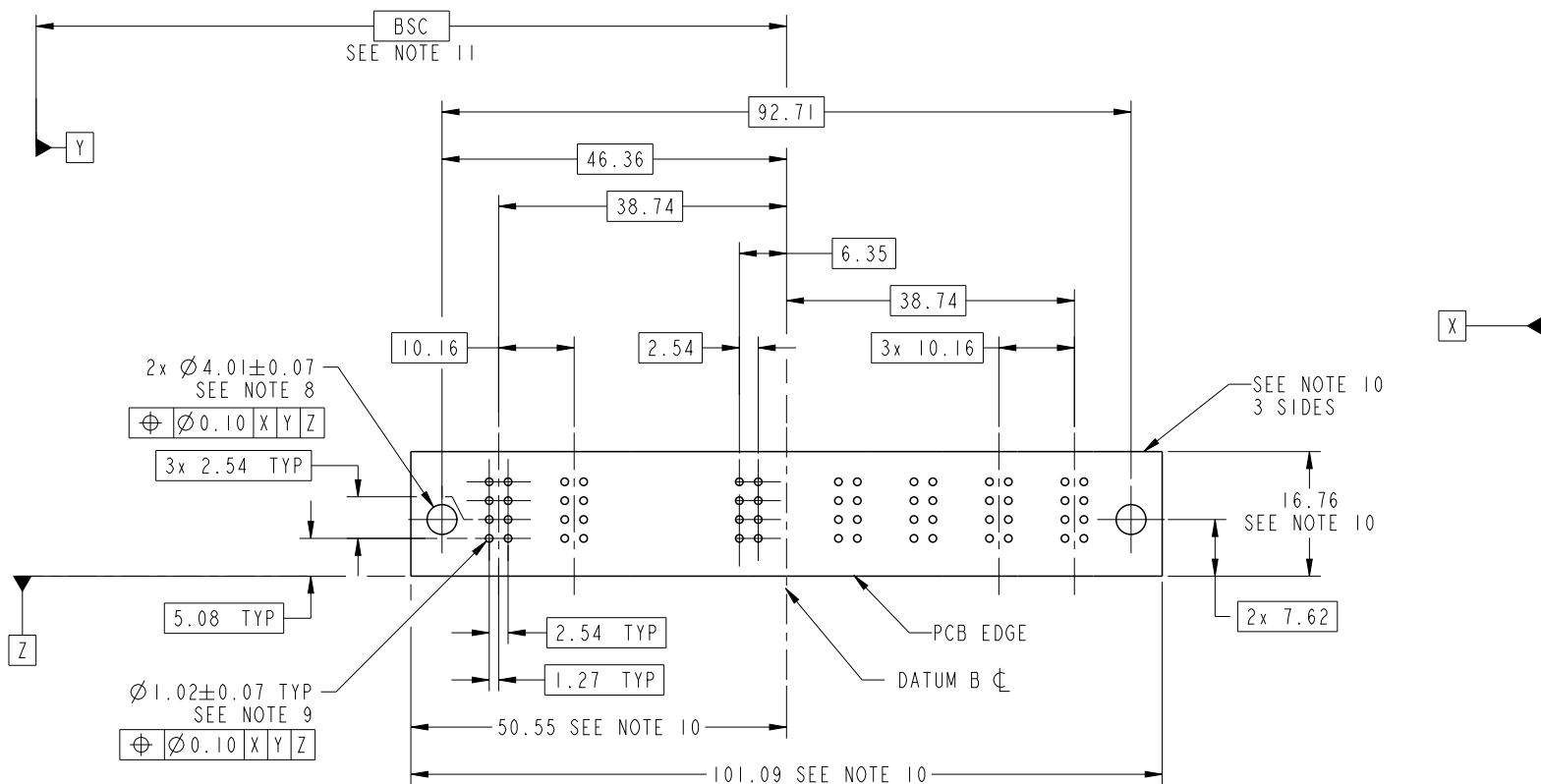


PARTIAL SECTION E-E

dr	Luo Weller	2013/01/23	projection 	MM ←→	size	A4	scale	1:1
eng	Luo Weller	2014/07/23			ecn no	-		
chr	-	-			rel level	Released		
appr	Pei-Ming Zheng	2014/07/23	product family	PwrBlade				
	title	6P + 16S + 8P RIGHT ANGLE SOLDER HEADER		dwg no	51939-734		rev	A
www.fci.com	cat. no.	-	Product - Customer Drw			sheet 2 of 4		

PRODUCT NUMBER

51939-734__
NOTE: 3



RECOMMENDED PCB LAYOUT

dr	Luo Weller	2013/01/23	projection 	MM 	size	A4	scale	1:1
eng	Luo Weller	2014/07/23			ecn no	-		
chr	-	-			rel level	Released		
appr	Pei-Ming Zheng	2014/07/23	product family	PwrBlade	rel level	Released		
	title	6P + 16S + 8P		dwg no	51939-734		rev	A
www.fci.com	cat. no.	-	Product - Customer Drw		sheet 3 of 4			

PRODUCT NUMBER

51939-734__
NOTE: 3

NOTES:

1. DIMENSIONS AND TOLERANCES ARE IN ACCORDANCE WITH ASME Y14.5M, 1994 UNLESS OTHERWISE SPECIFIED.

CONNECTOR NOTES:

- 2. HOUSING MATERIAL: UL 94 V-0 GLASS FILLED HIGH-TEMP THERMOPLASTIC
POWER CONTACT MATERIAL: COPPER ALLOY
SIGNAL PIN MATERIAL: COPPER ALLOY
- 3. SEE ITEM 1 & 2 IN PRINT 10064183 FOR PLATING SPEC OF 51939-734 AND 51939-734LF RESPECTIVELY.
- 4. MANUFACTURER'S NAME, DATE CODE AND OPTIONAL P/N TO APPEAR ON THIS SURFACE. THE P/N CAN BE OMITTED IF THERE IS NOT ENOUGH SPACE ON THIS SURFACE.
- 5. PRODUCT SPECIFICATION GS-12-149.
APPLICATION SPECIFICATION BUS-20-067.
- 6. PACKAGED IN TRAYS.

PCB NOTES:

- 7. ALL HOLE DIAMETERS ARE FINISHED HOLE SIZE.
- 8. MOUNTING HOLES, WHERE APPLICABLE, ARE UNPLATED.
- 9. $\varnothing 1.151 \pm 0.025$ DRILLED HOLES PLATED WITH
0.008 MIN SnPb OR Sn OVER 0.03
TO 0.08 Cu PLATING TO ACHIEVE
 $\varnothing 1.02 \pm 0.07$ HOLE.
- 10. CONNECTOR KEEP-OUT ZONE.
- 11. DATUM AND BASIC DIMENSIONS ARE ESTABLISHED BY CUSTOMER.

dr	Luo Weller	2013/01/23	projection 	MM 	size	A4	scale	1:1	
eng	Luo Weller	2014/07/23			ecn no	-			
chr	-	-							
appr	Pei-Ming Zheng	2014/07/23	product family	PwrBlade	rel level	Released			
	title	6P + 16S + 8P RIGHT ANGLE SOLDER HEADER			dwg no	51939-734		rev	A
www.fci.com	cat. no.	-	Product - Customer Drw			sheet 4 of 4			



Copyright FCI.