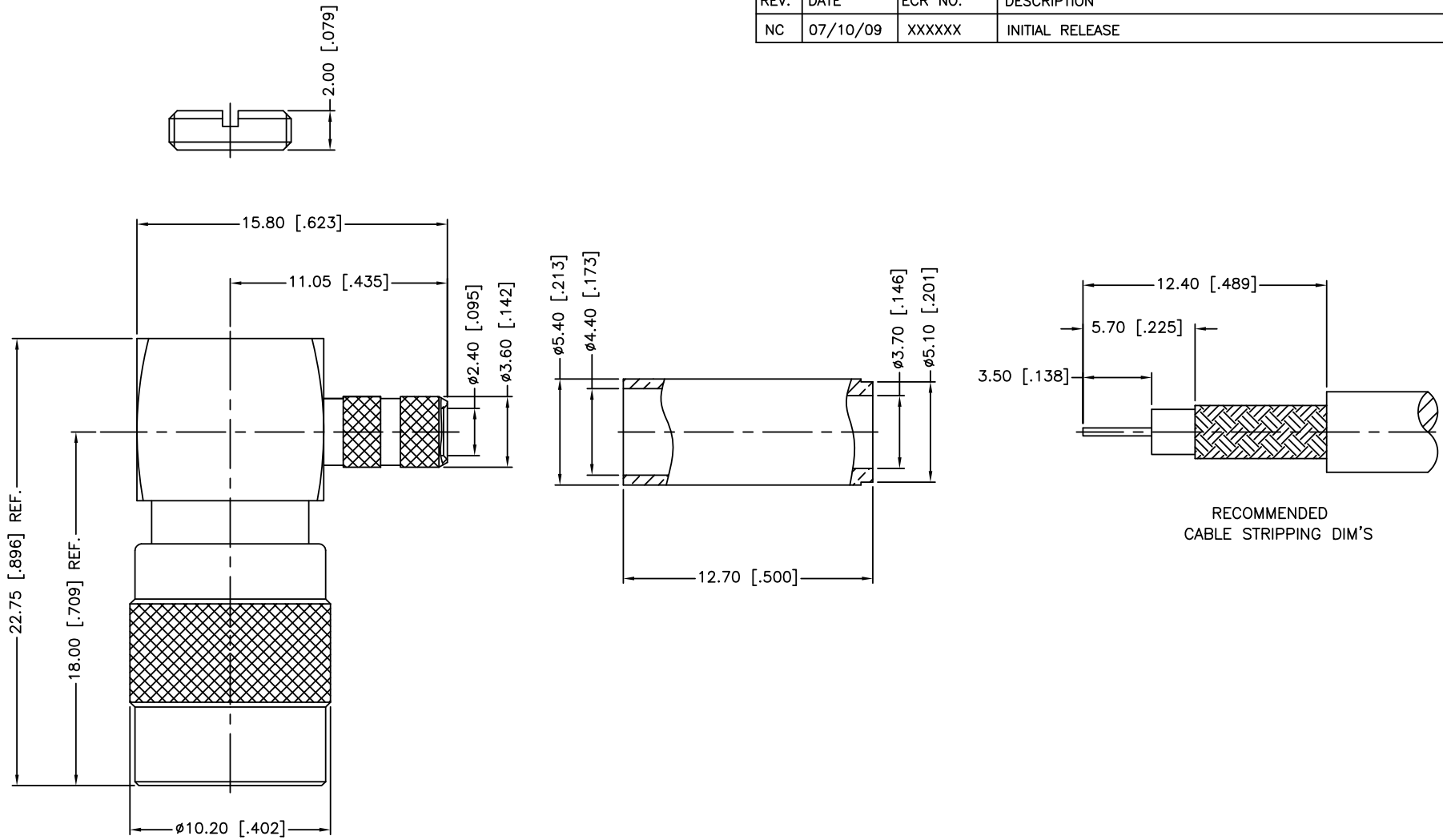


REV.	DATE	ECR NO.	DESCRIPTION
NC	07/10/09	XXXXXX	INITIAL RELEASE



RECOMMENDED  
CABLE STRIPPING DIM'S

1. CRIMPED FERRULE  
HEX CRIMP SIZE .178"
2. CONTACT PIN TO SOLDER

12	FERRULE	BRASS	NICKEL	1
11	NUT	BRASS	NICKEL	1
10	CONTACT PIN	BER. COPPER	GOLD	1
9	RING	BRASS	NICKEL	1
8	BARREL	BRASS	NICKEL	1
7	HOUSING	BRASS	NICKEL	1
6	INSULATOR	PTFE	NATURAL	1
5	SPRING	SUS 304	NATURAL	1
4	WASHER	BRASS	NICKEL	1
3	RETAINER RING	BER. COPPER	NATURAL	1
2	BODY	BRASS	GOLD	1
1	SHELL	BRASS	NICKEL	1
	DESCRIPTION	MATERIAL	FINISH	QTY

UNLESS OTHERWISE SPECIFIED DIMENSIONS ARE IN MILLIMETERS. DIMENSIONS IN [ ] ARE IN INCHES AND FOR CUSTOMER REFERENCE ONLY.

UNLESS OTHERWISE SPECIFIED TOLERANCES FOR MILLIMETERS ARE:  
0.5 - 8mm ± 0.20mm  
8 - 30mm ± 0.40mm  
30 - 120mm ± 0.50mm

UNLESS OTHERWISE SPECIFIED TOLERANCES FOR INCHES ARE:  
.020 - .315 = ± 0.007"  
.315 - 1.180 = ± 0.015"  
1.180 - 4.724 = ± 0.020"

DO NOT SCALE DRAWING

APPROVALS	DATE
DRAWN M.ZHANG	07/10/09
CHECKED	
ISSUED	
SHEET 1 OF 1	
CAD FILE	C:/CONNEX/142290.DWG

<h1>Amphenol Connex</h1>			
PART DESCRIPTION			
SMZ R/A SNAP LOCK CRIMP PLUG (FOR AT&T 735A CABLE)			
PART NO.			
142290			
DWG. NO.	142290.DWG	REV.	NC
SIZE	A	SCALE	NA