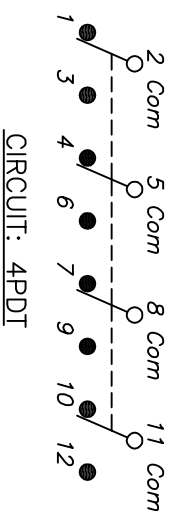


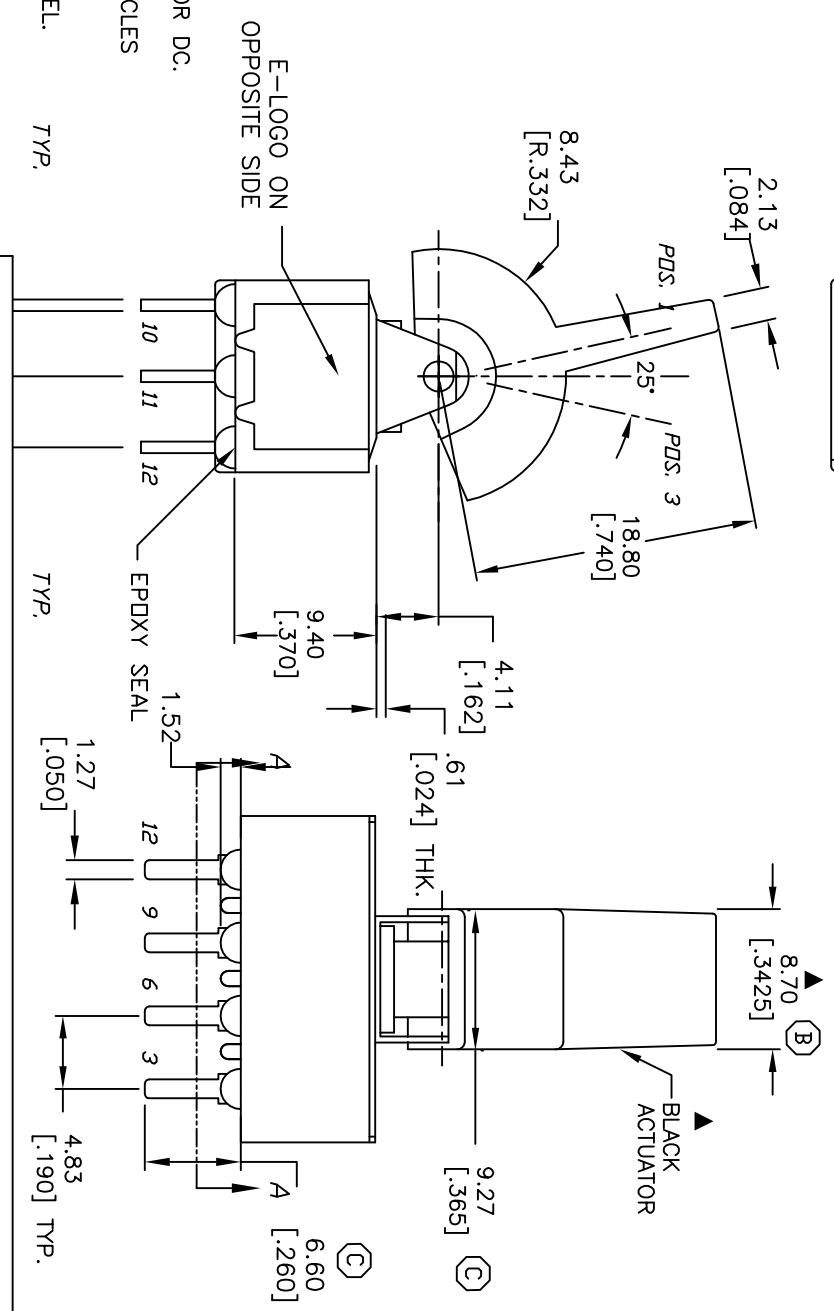
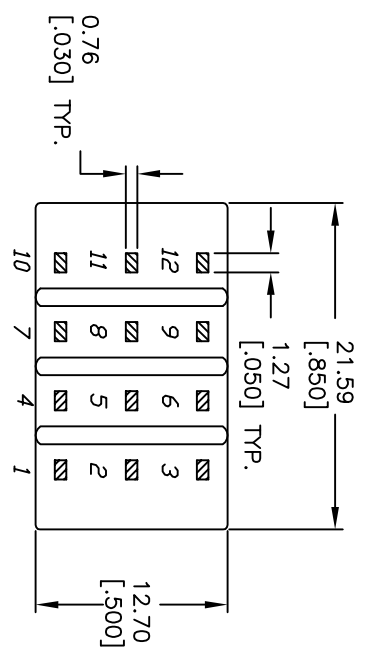
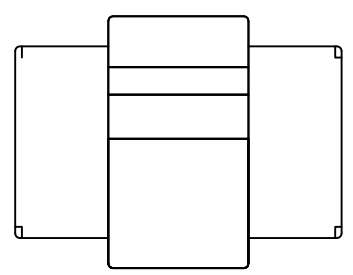
RECOMMENDED P.C.B. LAYOUT
SCALE 1X



SWITCH FUNCTION		
PDS. 1	PDS. 2	PDS. 3
DN	NONE	(DN)
2-3,5-6 8-9,11-12	DPEN	2-1, 5-4 8,7 11-10

NOTES:

1. ALL DIMENSIONS IN MM [INCH]
2. GENERAL TOLERANCE: X.X=±0.4
X.XX=±0.25
(DN) = MOMENTARY
3. TERM. NOS. FOR REF. ONLY
4. RATING: 0.4 VOLT-AMPS MAX. @20V MAX. AC OR DC.
5. CONTACT MATERIAL: GOLD PLATING.
6. ELECTRICAL LIFE: 50,000 MAKE-AND-BREAK CYCLES
AT FULL LOAD.
7. INSULATION RESISTANCE: 1,000M OHM MIN.
8. DIELECTRIC STRENGTH: 1,000 V RMS @SEA LEVEL.
9. OPERATING TEMP.: -30°C TO 85°C
10. ▲ DENOTES CRITICAL PARAMETER.
11. 2002/95/EC (ROHS) COMPLIANT



REV.	ECN No.	DESCRIPTION	DATE	CHKD
C	17604	CHANGED TERMINAL LENGTH TO 6.60	8/16/07	BF
B	17566	CHANGED ACTUATOR WIDTH TO 8.70	8/16/07	BF

SCALE	DATE	DR	DWG	REV
2:1	8/30/07	BF	T346011	C

E-SWITCH®

3004P2J2BLKM2RE

THE INFORMATION CONTAINED IN THIS DOCUMENT IS PROPRIETARY TO E-SWITCH AND IS NOT TO BE COPIED OR TRANSFERRED