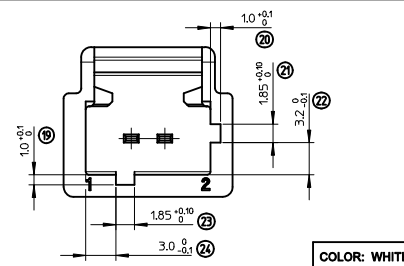
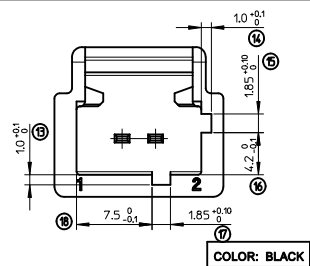
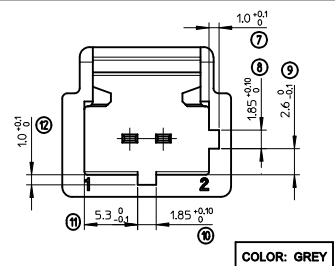
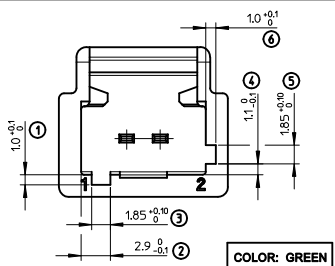
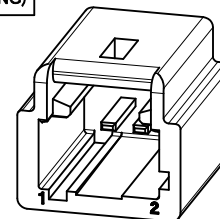


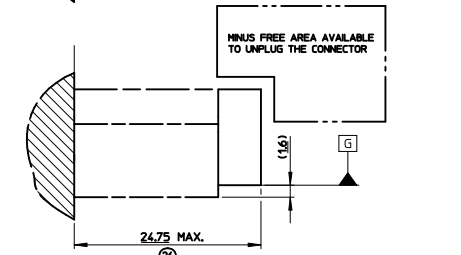
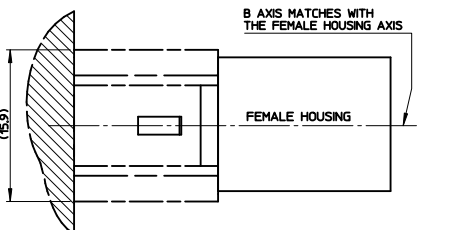
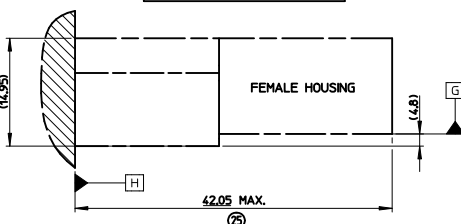
**CODINGS**



**ISO VIEW  
(GREEN CODING)**



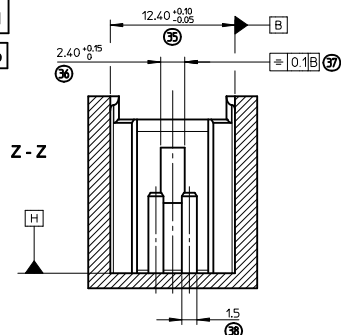
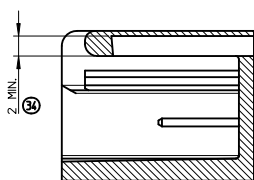
**OVERALL DIMENSIONS**



**HEADER'S DEFINITION**

GREEN CODING REPRESENTED

X - X VARIABLE



**NOTES:**

**MALE TERMINALS:**

- MALE TERMINALS RESISTANCE: 100N MIN IN MALE TERM. AXIS.
- MATERIAL: COPPER, COPPER ALLOY OR BRASS.
- FINISHES: TIN PLATED 2μ MIN.

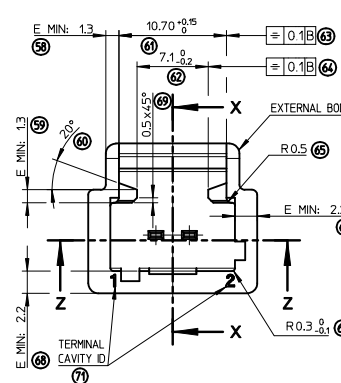
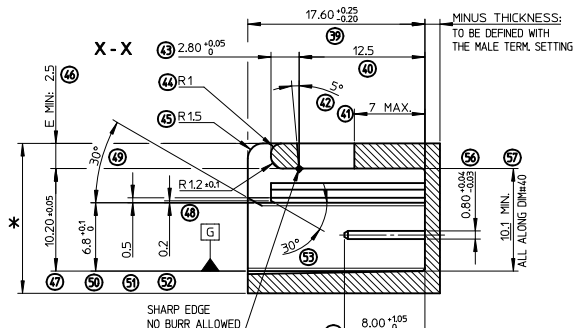
**HEADER:**

- RADIUS WITHOUT DIM: R=0.3MM
- E MIN: MINIMUM MATERIAL THICKNESS RECOMMENDED FOR SPECIFIED MATERIAL
- MATERIAL: PBT (RECOMMENDED) (70)
- \* WARPING: 0.35MM MAX. ACCEPTED ON "\*" DIM. WITH ANOTHER EXTERNAL SHAPE AS DRAWN WHEN PLUGGED.

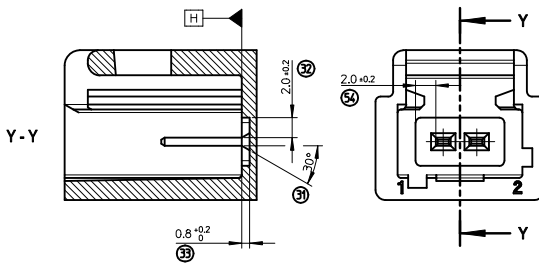
**MATES WITH:**

- MOLEX CONNECTORS 9887-102X

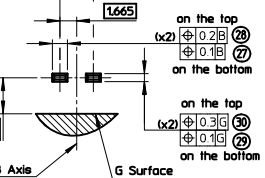
X - X



**MALE TERMINALS VARIABLE SETTING**



**MALE TERMINALS SETTING**



REV.	1	71		
	FIRST	LAST	DELETED	SUPERSEDED
INSPECTION NUMBERS				

**PRINT 1ST RELEASE**  
EC NO: 62072-079  
DRAWN BY: GDESBRUERES 2012/04/18  
CHKD: JDUCLIOS 2012/04/18  
APPROVED: JDUCLIOS 2012/04/18

**QUALITY SYMBOLS**

**GENERAL TOLERANCES (UNLESS SPECIFIED)**

	mm	INCH
4 PLACES	± 0.3	± 0.012
3 PLACES	± 0.2	± 0.008
2 PLACES	± 0.1	± 0.004
1 PLACE	± 0.1	± 0.004
0 PLACE	±	±

ANGULAR ± 2°  
DRAFT WHERE APPLICABLE MUST REMAIN WITHIN DIMENSIONS

**DIMENSION STYLE**  
MM ONLY

**DRAWN BY**  
GDESBRUERES 2012/04/18

**CHECKED BY**  
JDUCLIOS 2012/04/18

**APPROVED BY**  
OPLESSIS 2012/04/23

**MATERIAL NO.**  
N/A

**SCALE**  
4:1

**DESIGN UNITS**  
METRIC

**FIRST ANGLE PROJECTION**

**TITLE**  
2W INTERFACE 15 TERM. (FOR FEMALE HOUSING)

**moLEX**

**DOCUMENT NO.**  
SD-98815-002

**SHEET NO.**  
1 OF 1

**THIS DRAWING CONTAINS INFORMATION THAT IS PROPRIETARY TO MOLEX INCORPORATED AND SHOULD NOT BE USED WITHOUT WRITTEN PERMISSION**

REV.	MODIFICATIONS
A	-PRINT FIRST RELEASE