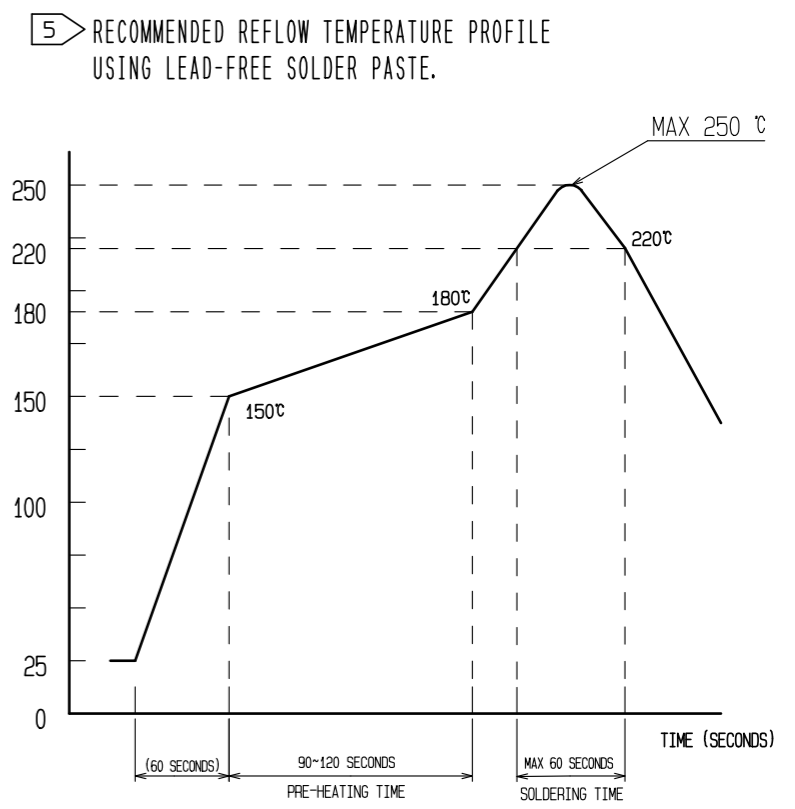


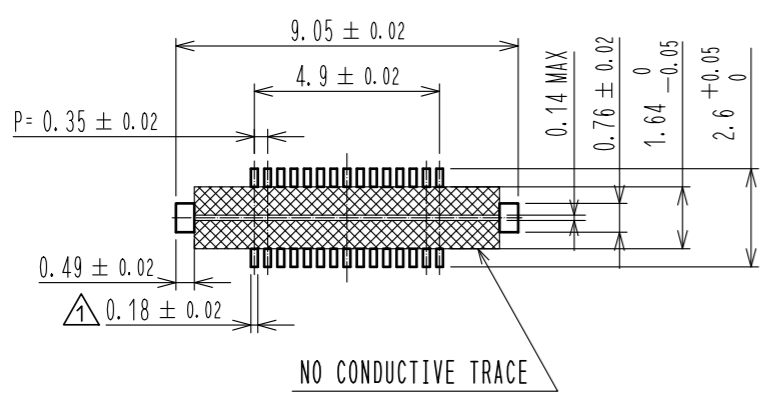
NOTE 1 . ALL LEAD CO-PLANARITY SHALL BE 0.08mm MAX.
 2 CONTACT PLATING SPECIFICATIONS
 CONTACT AREA : GOLD 0.05 μm MIN
 SMT LEAD : GOLD 0.05 μm MIN
 UNDER PLATING : NICKEL 1 μm MIN
 (SURFACE : SEALING)
 3 A PART OF THE WALL COULD BE NOTCHED.
 4 HRS MARK AND CAV No. ARE INDICATED IN APPROX. POSITION SHOWN.



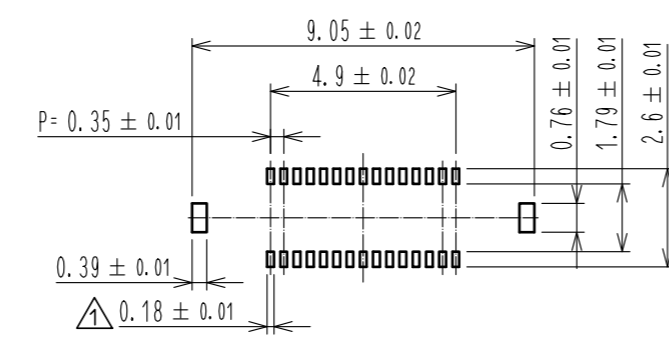
REFLOW METHOD: IR REFLOW
 NUMBER OF REFLOW CYCLES: 2 CYCLES MAX.
 1) REFLOW TIME
 DURATION ABOVE 220°C, 60 SEC MAX.
 (PEAK TEMPERATURE: 250°C MAX)
 2) PRE-HEAT TIME
 PRE-HEAT TEMPERATURE(MIN): 150°C
 PRE-HEAT TEMPERATURE(MAX): 180°C
 PRE-HEAT TIME: 90-120 SEC.

5 THIS TEMPERATURE PROFILE IS PER THE CONDITIONS SHOWN ABOVE. ADDITIONAL FACTORS, SUCH AS SOLDER PASTE TYPE, PCB SIZE AND OTHER MOUNTED COMPONENTS COULD AFFECT THE PROFILE. THEREFORE, A THOROUGH EVALUATION OF MOUNTING COONDITION IS REQUIRED PRIOR TO PRODUCTION. TEMPERATURE IS MEASURED AT CONTACT LEAD.
 6. PLEASE CONTACT US IN CASE YOU WILL MAKE DIFFERENT SETTINGS FROM OUR RECOMMENDATION.

◆ RECOMMENDED PCB LAYOUT

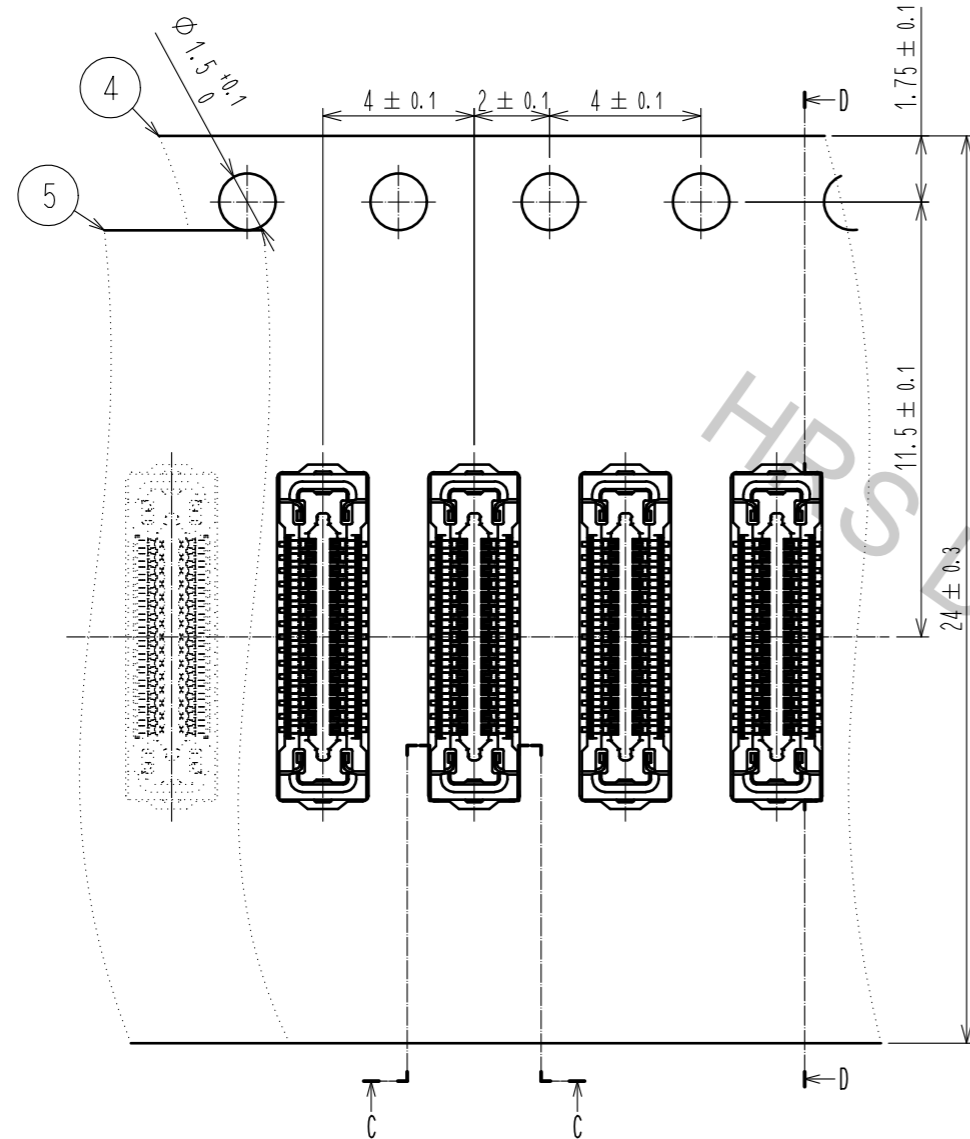


◆ RECOMMENDED METAL MASK DIMENSIONS
 METAL MASK THICKNESS : 100 μm

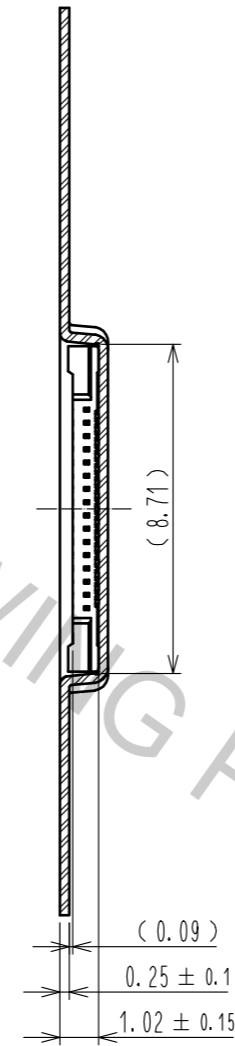


| | | | | | | | |
|--------------------------------------|-----------------|------------------------------|------------|--|------------------------------|-------------------------|--------------------|
| 4 | PS | CLEAR(EMBOSSED CARRIER TAPE) | | | | | |
| 3 | COPPER ALLOY | 2 | 7 | PS | CLEAR (REINFORCEMENT COLLAR) | | |
| 2 | PHOSPHOR BRONZE | 2 | 6 | PS | BLACK (PLASTIC REEL) | | |
| 1 | LCP | UL94 V-0, BLACK | 5 | POLYESTER | CLEAR (COVER TAPE) | | |
| NO. | MATERIAL | FINISH . REMARKS | NO. | MATERIAL | FINISH . REMARKS | | |
| UNITS mm | | SCALE 10 : 1 | COUNT 2 | DESCRIPTION OF REVISIONS DIS-H-00001820 | DESIGNED NY. YAMASHIRO | CHECKED TS. MIYAZAKI | DATE 16. 07. 08 |
| HRS HIROSE ELECTRIC CO., LTD. | | APPROVED : KH. IKEDA | 14. 04. 04 | DRAWING NO. EDC3-356936-02 | | | |
| | | CHECED : WR. FUKUCHI | 14. 04. 04 | PART NO. BM24-30DS/2-0.35V(51) | | | |
| | | DESIGNED : YH. HASEGAWA | 14. 04. 04 | CODE NO. CL677-2008-8-51 | | | |
| | | DRAWN : YH. HASEGAWA | 14. 04. 04 | | | | |

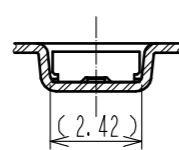
EMBOSSED CARRIER TAPE PACKAGING (FREE)



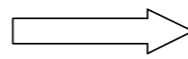
D-D(5:1)



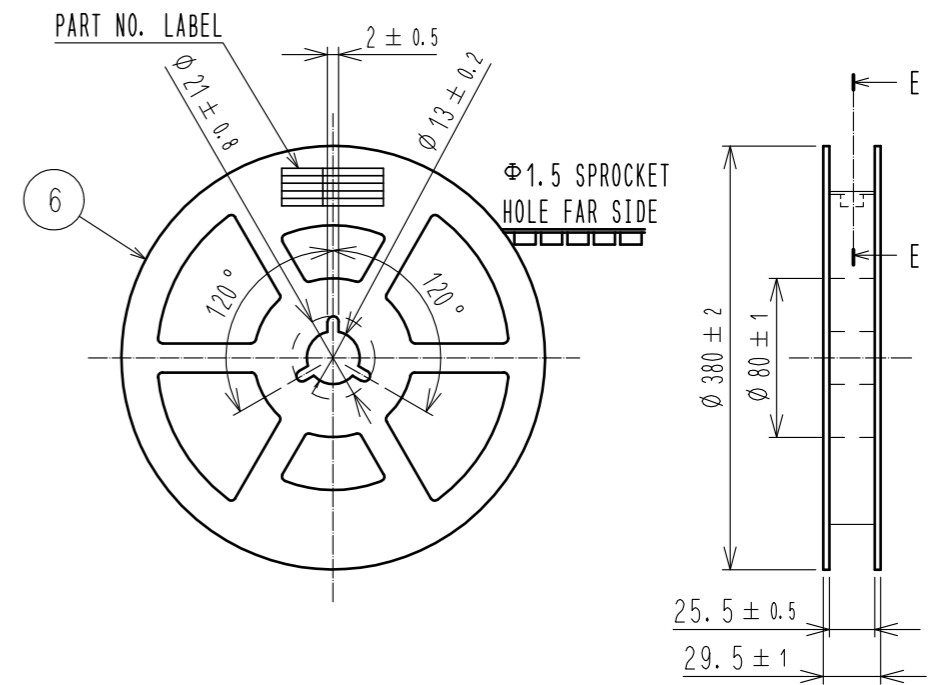
C-C (5:1)



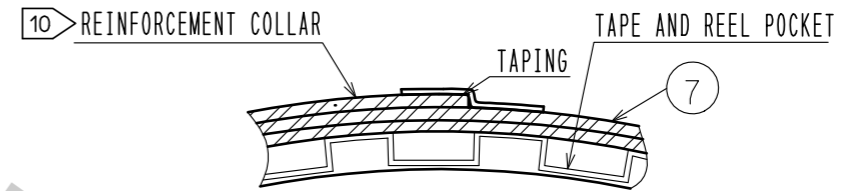
DIRECTION OF UNREELING



STYLE AND DIMENTION OF REEL (FREE)



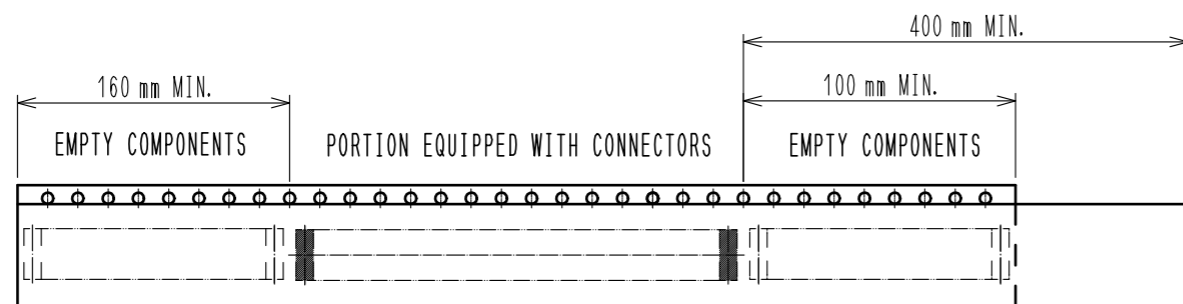
E-E (FREE)



DETAIL OF PART NO. LABEL

| | |
|-------|-----------------------|
| 製造年月日 | ** ** * |
| 製品コード | CL0677-2008-8(51) |
| 製品名 | BM24-30DS/2-0.35V(51) |
| 数量 | 10,000 |
| 納入者 | ヒロセ電機(株) |

DATA OF MANUFACTURED
CODE NO.
PART NO.
QUANTITY
SUPPLIER



TRAILER

9 TAPING(FREE)

LEADER

- 7 . PER REEL 10,000 CONNECTORS.
- 8 . THE DIMENSIONS IN PARENTHESES ARE FOR REFERENCE.
- 9 . REFER TO JIS C 0806(PACKAGING OF COMPONENTS FOR AUTOMATIC HANDLING)
- 10 . AFTER PACKAGING, ROLL 2 METERS OF THE REINFORCEMENT COLLAR TO OUTER CIRCUMFERENCE OF TAPE AND REEL POCKET. AND TAPE DOWN AT THE END THE COLLAR.

HRS

| | |
|-------------|-----------------------|
| DRAWING NO. | EDC3-356936-02 |
| PART NO. | BM24-30DS/2-0.35V(51) |
| CODE NO. | CL677-2008-8-51 |

2/2