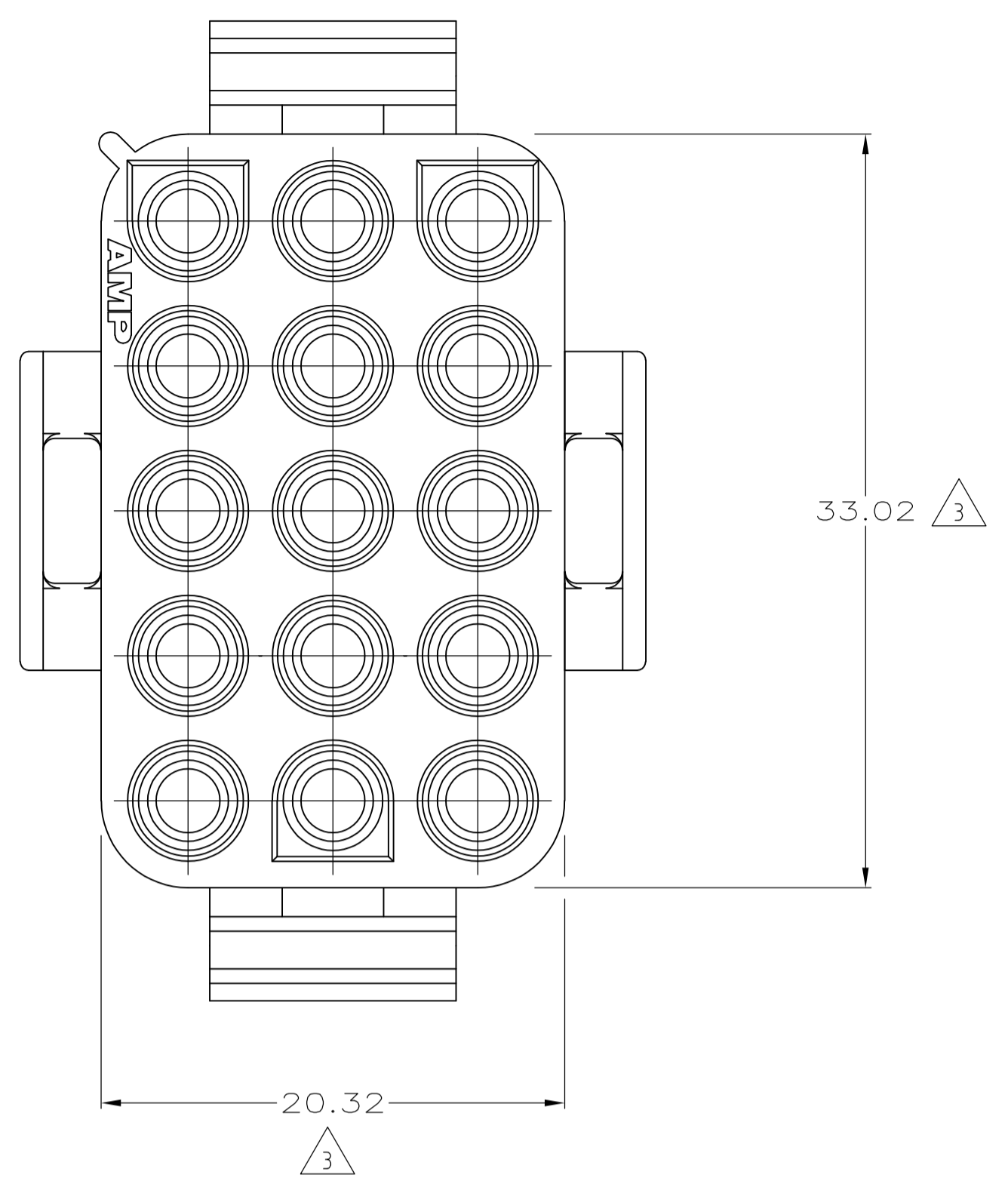
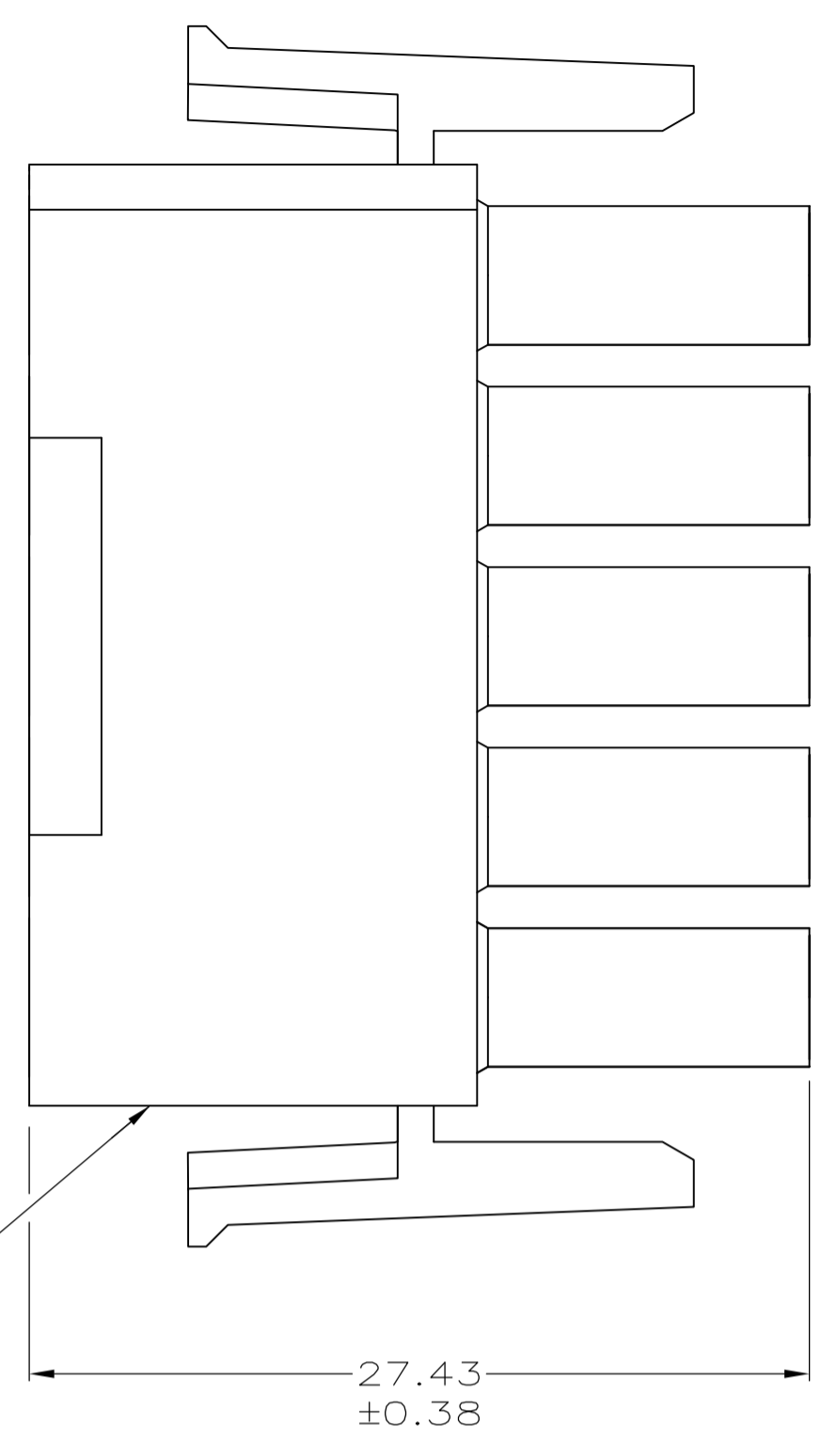
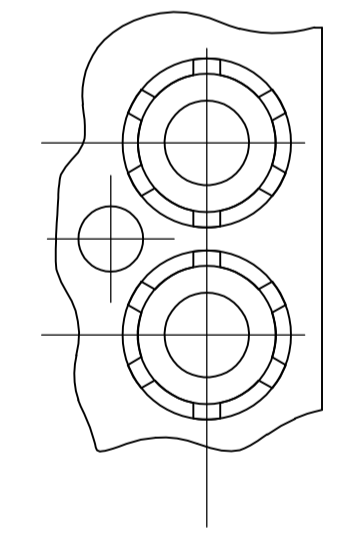
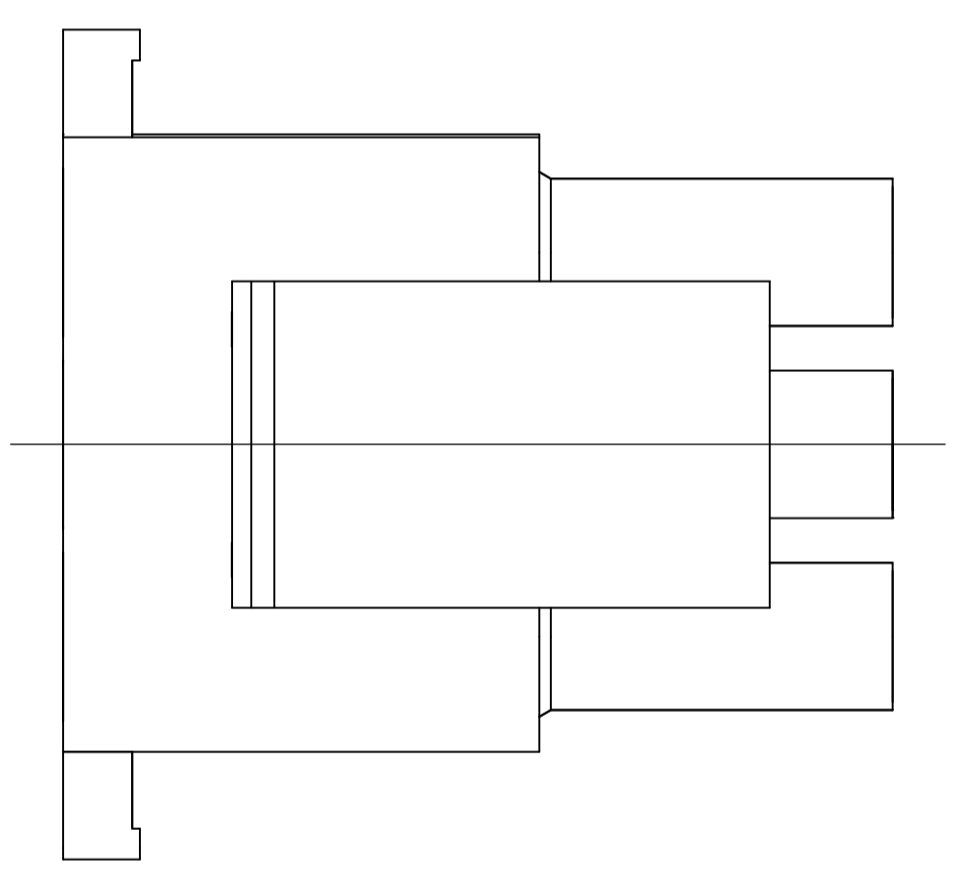


SEE DETAIL A



- 1 MATES WITH APPROPRIATE UNIVERSAL MATE-N-LOK™ CAP OR HEADER.
- 2 SMALL NICKS ARE PERMITTED ON THE CIRCUIT TOWERS WHICH COULD INCREASE THE INITIAL HOUSING MATING FORCE BY UP TO 4.4 NEWTONS (1.0 LBS). NO INDIVIDUAL NICKED TOWER SHALL INCREASE THIS FORCE BY OVER 2.2 NEWTONS (.5 LBS).
- 3 DIMENSION INDICATED IS AS MOLDED. ADDITIONAL GROWTH DUE TO SUBSEQUENT MOISTURE ABSORPTION MAY OCCUR.
- 4 FOUR RIBS EQUALLY SPACED, NO SPECIFIC ORIENTATION. SIX RIBS EQUALLY SPACED, NO SPECIFIC ORIENTATION, OPTIONAL.
- 5 UNDERWRITES RECOGNIZED COMPONENT LOGO AND CSA CERTIFICATION LOGO TO BE LOCATED ONCE EACH SIDE OF HOUSING.
- 6 PHOSPHOR BRONZE CONTACTS SHOULD ALWAYS BE USED WITH THIS HOUSING.



PARTIAL DETAIL A  
OPTIONAL CONSTRUCTIONS

33.02	1.300
27.43	1.080
20.32	.800
0.38	.015
0.13	.005
MM	IN

CONVERSION TABLE

METRIC

794546-1  
PART NUMBER

THIS DRAWING IS A CONTROLLED DOCUMENT.		DIN L. McEACHIN 14-JAN-2000	 TE Connectivity
DIMENSIONS: mm		CHK M. TRULL 14-JAN-2000	
TOLERANCES UNLESS OTHERWISE SPECIFIED:		APPD M. TRULL 14-JAN-2000	NAME
0. PLC ± -			PLUG, 15 CIRCUIT, UNIVERSAL MATE-N-LOK™
1. PLC ± -			PRODUCT SPEC
2. PLC ± 0.13			APPLICATION SPEC
3. PLC ± -			SIZE
4. PLC ± -			CAGE CODE
ANGLES ± 0° 30'			DRAWING NO
MATERIAL NYLON, UL 94V-2, BLACK	FINISH -	WEIGHT -	RESTRICTED TO
CUSTOMER DRAWING		A1 00779	794546
SCALE 4:1		SHEET 1 of 1	REV A2