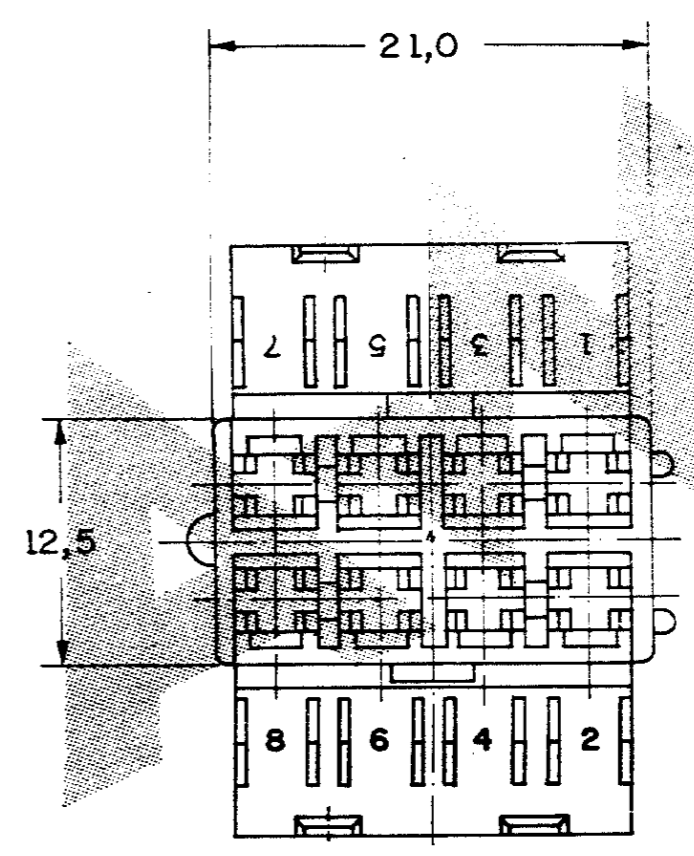
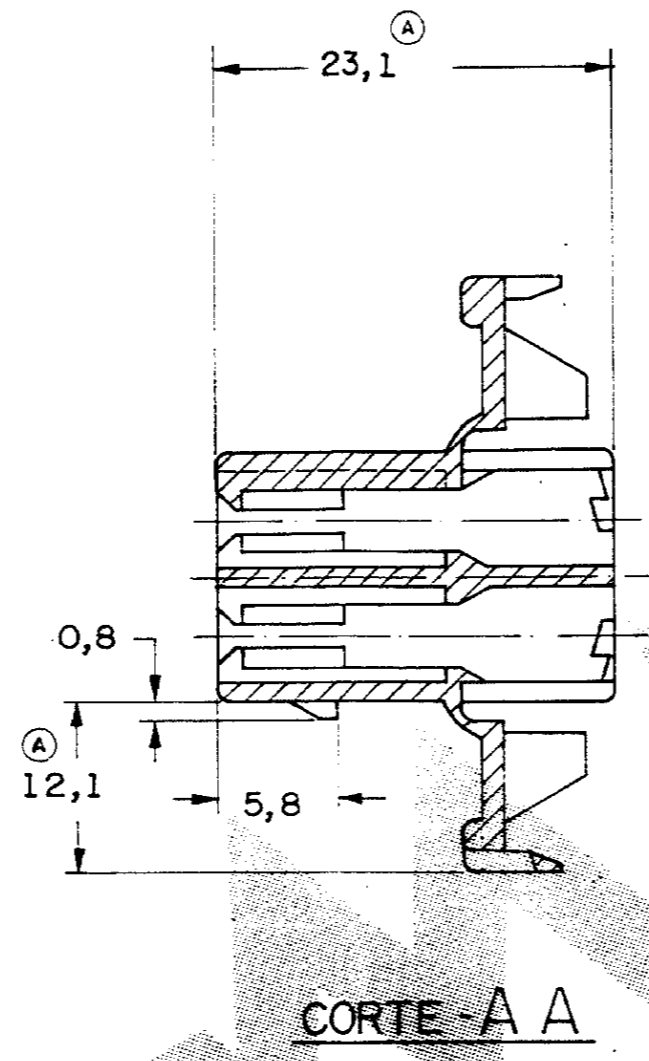
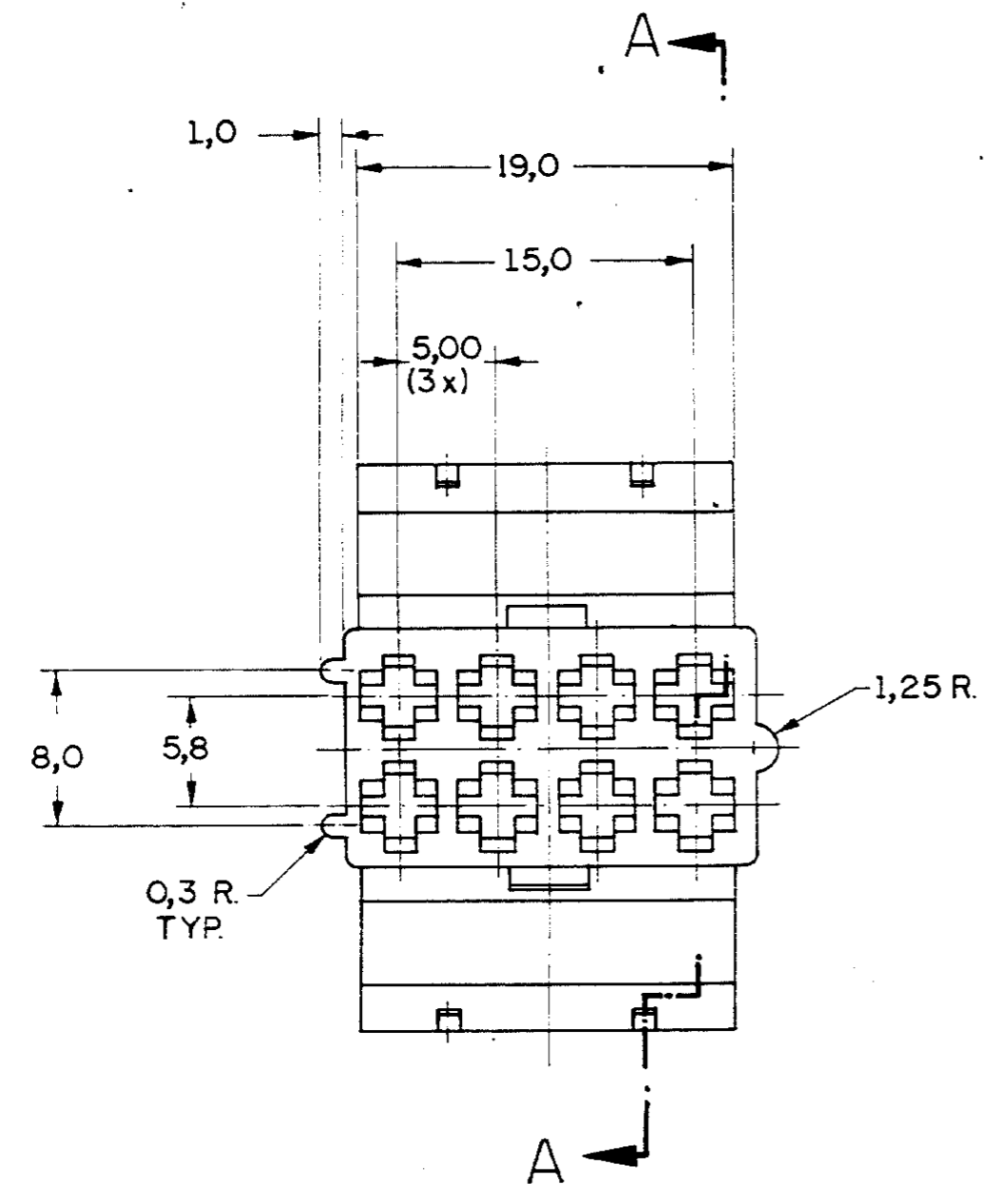


C881647

881647	DO NOT SCALE DIMENSIONS IN mm.		METRIC	3rd ANGLE PROJECTION
REQ. PER ASSY.	ITEM	DESCRIPTION	MATERIAL	FINISH



- 1 - GRAVAÇÕES QUE DEVERÃO CONSTAR:
- MARCA REGISTRADA AMP.
 - MARCA REGISTRADA AUTOLATINA.
 - NÚMERO DA PEÇA AMP.
 - NÚMERO DA PEÇA AUTOLATINA.
 - CÓDIGO DO PAÍS PRODUTOR.
 - IDENTIFICAÇÃO DE CAVIDADE.

OTHER TREATMENT	PRETO	POLIAMIDA	881647 -1
FINISH		MATERIAL	PART NUMBER
CUSTOMER DWG for REFERENCE ONLY			
<small>THIS DRAWING IS UNPUBLISHED. RELEASED FOR PUBLICATION BY AMP DO BRASIL LTDA S.P. ALL INTERNATIONAL RIGHTS RESERVED. AMP PRODUCTS MAY BE COVERED BY U.S. AND FOREIGN PATENTS AND/OR PATENTS PENDING.</small>			
TOLERANCES UNLESS OTHERWISE STATED		INS. DIA. RANGE	WIRE RANGE
DEC 20,3		SCALE 3:1	
ANGLES ±1°		AMP AMP do BRASIL LTDA São Paulo, Brasil	
DR M. R. Briz 27/JAN/81			
CHK JK/ Fabricação 03-4-81		DESCRIPTION HOUSING, 8 POSN., J. P. TIMER	
DE			
A 25.1 ERA 20.9 E12.1 ERA 9.9	Briz 069 00-09-81	A2	
O ERA P90-29010	Briz C.G. 02-29/81	C 881647	
ISS REVISION RECORD	DR CHK DATE	APP	SHEET 10-1

LATEST REVISION