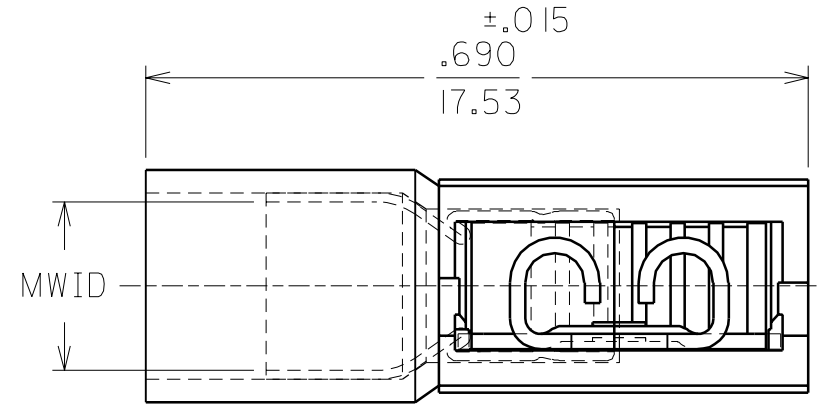
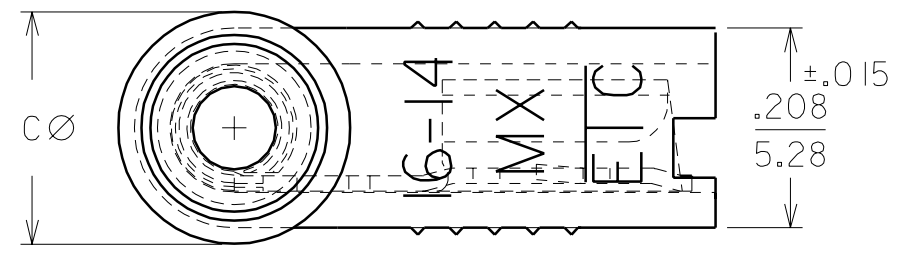
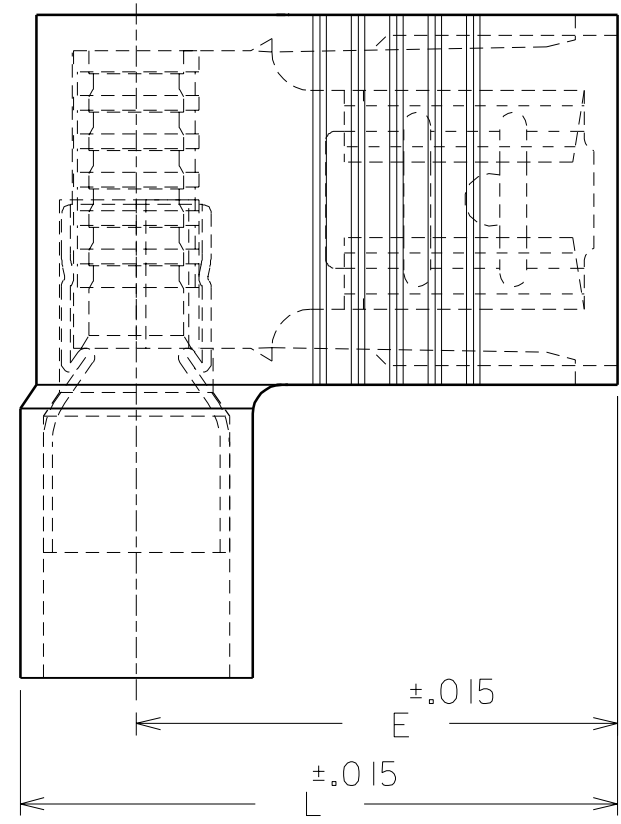


| PART NO. | AWG   | COLOR | MWID      | TAB SIZE  | L          | E          | C         |
|----------|-------|-------|-----------|-----------|------------|------------|-----------|
| AA-5222  | 22-18 | RED   | .150/3.81 | .187X.020 | .620/15.75 | .512/13.00 | .222/5.64 |
| AA-5223  | 22-18 | RED   | .150/3.81 | .187X.032 | .620/15.75 | .512/13.00 | .222/5.64 |
| BB-5224  | 16-14 | BLUE  | .170/4.32 | .187X.020 | .620/15.75 | .500/12.70 | .242/6.15 |
| BB-5225  | 16-14 | BLUE  | .170/4.32 | .187X.032 | .620/15.75 | .500/12.70 | .242/6.15 |

NOTES:  
 1. MWID = MAX. WIRE INSULATION DIA.  
 2. ALL DIMENSIONS = INCHES/MM



CUST. DWG.

| DIMENSIONS SHOWN (METRIC) INCH                                    |       |           |       |
|---|-------|-----------|-------|
| UNLESS OTHERWISE SPECIFIED<br>TOLERANCES: ANGULAR $\pm 1/2^\circ$ |       |           |       |
|   | INCH  | METRIC    |       |
| 3 PLACE   | $\pm$ | $\pm$     |       |
| 2 PLACE   | $\pm$ | $\pm$     |       |
| 1 PLACE   | $\pm$ | $\pm$     |       |
| DRAFT WHERE APPLICABLE MUST<br>REMAIN WITHIN DIMENSIONS           |       |           |       |
| DRWG. BY  | RCM   | CHK'D. BY | JM    |
| APP'D. BY   | FP    | SCALE     | NO:NE |

| REVISE ONLY ON CAD SYSTEM                                     |           |   |                  |
|---|-----------|---|------------------|
| TITLE<br>AVIKRIMP FLAG<br>FULLY INSULATED<br>.187X.020 & .032 |           |   |                  |
| molex ETC INC.<br>PINELLAS PARK, FLA. 33781 U.S.A.            |           | SHEET NO.   | DATE<br>08/26/93 |
| PART NO.<br>SEE TABLE   |           | DRWG. NO.<br>CUST. DWG.   |                  |
| FILE NAME<br>CDFLA187<br>CST                                  |           | THIS DRAWING CONTAINS INFORMATION THAT IS PROPRIETARY TO<br>MOLEX-ETC INC. AND SHOULD NOT BE USED WITHOUT WRITTEN PERMISSION. |                  |
|   | SIZE<br>B |   |                  |

| LTR. | REVISIONS |
|------|-----------|
|      |           |
|      |           |