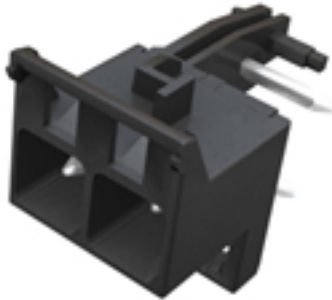


## CH20M SHL-SMT 5.00/02GR 4.2BX

**Weidmüller Interface GmbH & Co. KG**  
 Klingenbergstraße 16  
 D-32758 Detmold  
 Germany  
 Fon: +49 5231 14-0  
 Fax: +49 5231 14-2083  
 www.weidmueller.com



### Naturally, the CH20M system also shows its perfection in the peripheral interface.

If you are taking into consideration design options, processing, usability, reliability and security, then pin headers and connectors are just as critical in the real world as the entire system.

In every sector, the connection technology is at the top of its class.

- **100% non-interchangeable** the unique, captive "Auto-Set" encoding ensures a misconnection-proof assignment of the connections.
- **100% safe** Touch protection for the pin header and socket block on both sides
- **100% efficient** All THR pin headers are reflow compatible

### General ordering data

Order No.	<a href="#">1069550000</a>
Part designation	SHL-SMT 5.00/02GR 4.2BX
Version	PCB plug-in connector, male header, 5 mm, No. of poles: 2, Solder pin length: 4.2 mm, tinned, black
GTIN (EAN)	4032248825110
Qty.	156 pc(s).
Packaging	Box

## CH20M SHL-SMT 5.00/02GR 4.2BX

**Weidmüller Interface GmbH & Co. KG**  
 Klingenbergstraße 16  
 D-32758 Detmold  
 Germany  
 Fon: +49 5231 14-0  
 Fax: +49 5231 14-2083  
 www.weidmueller.com

## Technical data

### Dimensions (1)

Length	22 mm	Width	10.4 mm
Height	14.4 mm		

### System parameters

Version	Connection element, right	No. of connections	2
Type of contact to PCB	Solder connection, direct	Tolerance for the PCB shape	±0.15 mm
Contact to terminal rail	No	Encapsulation option	No

### Material data

Flammability class UL 94	V-0	Insulating material	LCP
Colour	black	Contact material	Copper alloy
Contact surface	tinned	Highest continuous operating temperature, min.	-20 °C
Highest continuous operating temperature, max.	85 °C		

### Rating data to DIN IEC

Rated current, max. No. of poles (Tu=20°C)	10 A	Rated current, no. of poles (Tu=40°C), max.	9 A
Rated voltage for overvoltage class/pollution severity II/2	400 V	Rated voltage for overvoltage class/pollution severity III/2	320 V
Rated voltage at overvoltage category/pollution degree III/3	250 V	Rated impulse withstand voltage for overvoltage class/pollution severity II/2	4 kV
Rated impulse withstand voltage for overvoltage class/pollution severity III/2	4 kV	Rated impulse withstand voltage for overvoltage class/pollution severity III/3	4 kV

### Approvals

Approvals institutes

### Classifications

eClass 6.0 27-26-07-04