

INSULATION CRIMP

BARREL CRIMP

"G" DIM. WITH PIN AT	"W" DIM. WITH PIN AT
N / G0	N / NO G0
.052	.072

"G" DIM. WITH PIN AT	"W" DIM. WITH PIN AT
N / G0	N / NO G0
.091	.097

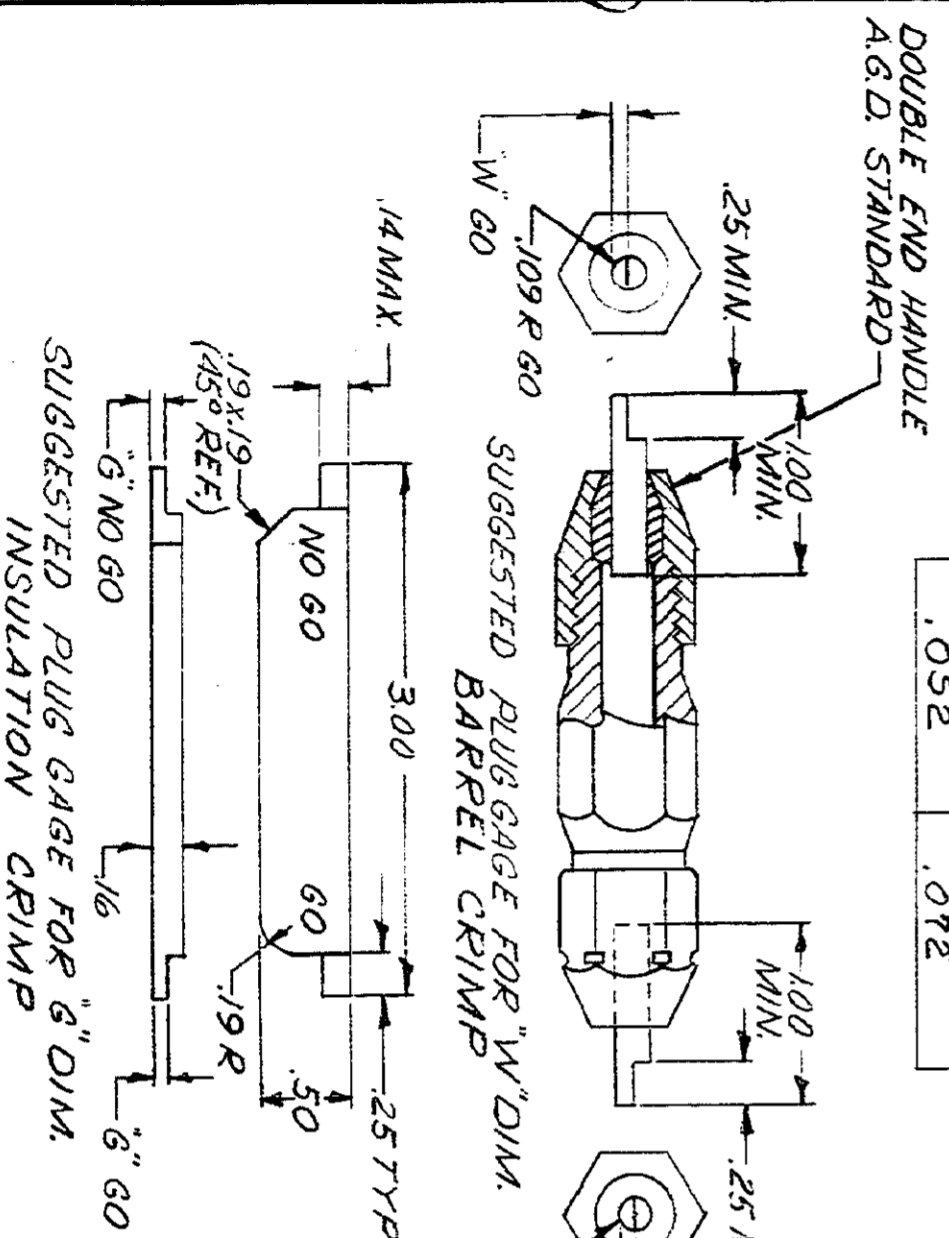
NOTE:  
PLUG GAGE TOOL FROM SIDE  
OPPOSITE INSULATION INSERTS

NOTE:  
"G" DIM. APPLIES AT CENTER OF "Y"  
NOTCH AS INDICATED ON DRAWING.

NOTE:  
TOOL SHOULD BE BOTTOMED, OR  
CLOSED, BEFORE PLUG GAGING.

NOTE:  
FOR REPLACEMENT OF PARTS  
OTHER THAN SNAP RINGS & PINS,  
TOOL SHOULD BE RETURNED TO OUR  
FACTORY TO INSURE PROPER CERTI-  
CRIMP ADJUSTMENT.

PLUG GAGE DIMENSIONS APPL. WHEN TOOL IS  
DETONED BUT NOT UNDER PRESSURE.



USED ON	59461
REV. NO.	
1	
2	
3	
4	
5	
6	
7	
8	
9	
10	
11	
12	
13	
14	
15	
16	
17	
18	
19	
20	
21	

FINISH: EXCEPT AS NOTED:  
MATERIAL: AMP 850  
HEAT TREAT:

LOC. / SIZE	DR. / APP'D	DATE	SCALE	REV.
M / C	R. VOLKSKA / V.B. Foster	5/14/59	1:1	J-2
CUSTOMER COPY REFERENCE ONLY		AMP INCORPORATED HARRISBURG, PENNA.		
HEAVY HEAD HAND TOOL ASSEMBLY		CLASS. QUAL. TYPED & HEAT RESISTANT TYPE W-DIAMOND GRIP STRAIGHTENER		
ALL RIGHTS RESERVED AND PRODUCTS COVERED BY PATENTS AND/OR PATENTS PENDING.		59461		