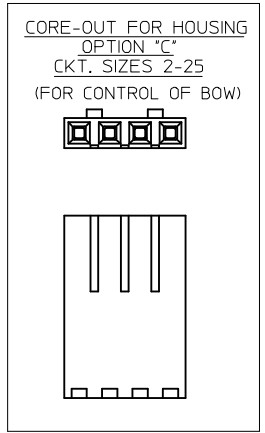
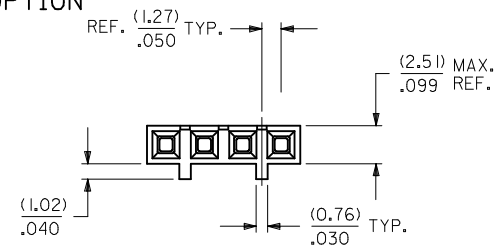
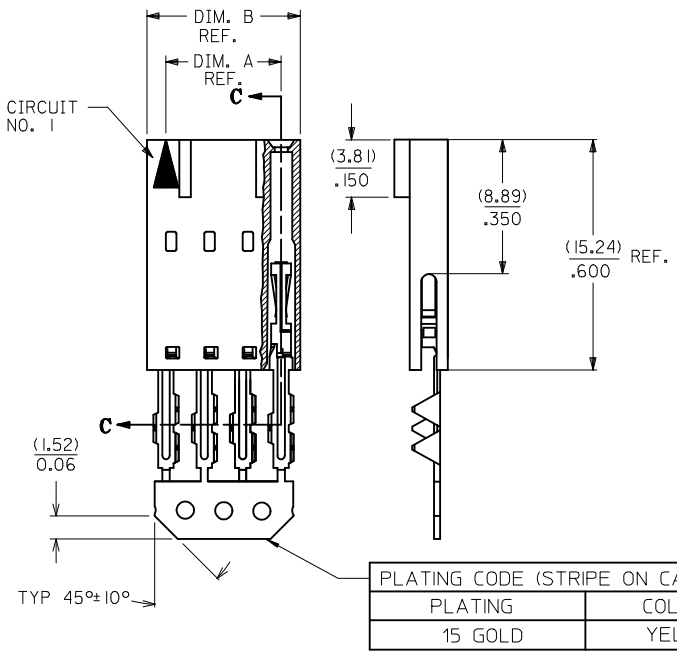


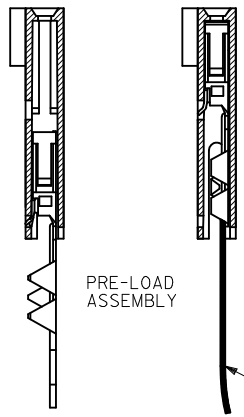
"C" - OPTION



CKT. SIZE	EDP. NO.	ENG. NO.	A	B
2	015-47-4021	70430-0211	(2.54) .100	(5.05) .199
3	015-47-4031	70430-0212	(5.08) .200	(7.59) .299
4	015-47-4041	70430-0213	(7.62) .300	(10.13) .399
5	015-47-4051	70430-0214	(10.16) .400	(12.67) .499
6	015-47-4061	70430-0215	(12.70) .500	(15.21) .599
7	015-47-4071	70430-0216	(15.24) .600	(17.75) .699
8	015-47-4081	70430-0217	(17.78) .700	(20.29) .799
9	015-47-4091	70430-0218	(20.32) .800	(22.83) .899
10	015-47-4101	70430-0219	(22.86) .900	(25.37) .999
11	015-47-4111	70430-0220	(25.40) 1.000	(27.91) 1.099
12	015-47-4121	70430-0221	(27.94) 1.100	(30.45) 1.199
13	015-47-4131	70430-0222	(30.48) 1.200	(32.99) 1.299
14	015-47-4141	70430-0223	(33.02) 1.300	(35.53) 1.399
15	015-47-4151	70430-0224	(35.56) 1.400	(38.07) 1.499
16	015-47-4161	70430-0225	(38.10) 1.500	(40.61) 1.599
17	015-47-4171	70430-0226	(40.64) 1.600	(43.15) 1.699
18	015-47-4181	70430-0227	(43.18) 1.700	(45.69) 1.799
19	015-47-4191	70430-0228	(45.72) 1.800	(48.23) 1.899
20	015-47-4201	70430-0229	(48.26) 1.900	(50.77) 1.999
21	015-47-4211	70430-0230	(50.80) 2.000	(53.31) 2.099
22	015-47-4221	70430-0231	(53.34) 2.100	(55.85) 2.199
23	015-47-4231	70430-0232	(55.88) 2.200	(58.39) 2.299
24	015-47-4241	70430-0233	(58.42) 2.300	(60.93) 2.399
25	015-47-4251	70430-0234	(60.96) 2.400	(63.47) 2.499



SECTION C-C



FLAT FLEX CABLE (F.F.C.)  
(SEE NOTE 2.)

PLATING CODE (STRIPE ON CARRIER STRIP)	
PLATING	COLOR
15 GOLD	YELLOW

- HOUSING MATERIAL: GLASS FILLED POLYESTER, UL94V-0, COLOR: BLACK.  
TERMINAL MATERIAL: PHOSPHOR BRONZE.  
PLATING 15 GOLD - 0.38 MICROMETERS/15 MICROINCHES MINIMUM GOLD PLATE IN SELECT AREA  
1.90 MICROMETERS/75 MICROINCHES MINIMUM TIN PLATE IN SELECT AREA  
1.27 MICROMETERS/50 MICROINCHES MINIMUM NICKEL PLATE OVERALL.
- PRE LOADED ASSEMBLY TO BE USED WITH (0.30)/.012 MAX. THICK FLAT CABLE WITH (1.57)/.062 WIDE COPPER CONDUCTORS ON (2.54)/.100 CENTERS OR, (0.13)/.005-(0.28)/.011 THICK MYLAR WITH (1.02)/.040 - (1.65)/.065 WIDE SILVER INK CONDUCTORS ON (2.54)/.100 CENTERS.
- PRODUCT SPECIFICATION: PS-70430.
- STANDARD PACKING PER PK70873-0001 SHALL BE USED.
- SEE CHART FOR CIRCUIT SIZES, "A" AND "B" DIMENSIONS.
- TWO (2) CIRCUIT ASSEMBLIES SUPPLIED AS GROUPED PAIRS.
- PART MATES WITH (0.64)/.025 SQ. PINS, (8.13)/.320 TO (5.08)/.200 LONG ON (2.54)/.100 CENTERS.
- PARTS CONFORM TO CLASS B COSMETIC SPECIFICATION PS-45499-002.

THE PRIMARY CARTON WITH A LABEL STATING "ELV AND RoHS COMPLIANT" IS LEAD FREE. CARTONS WITHOUT THIS LABEL MAY CONTAIN LEAD.

<b>STANDARDIZE</b> EC NO: UCP2013-2452 DR: W/WHIPPLE 2012/12/17 CHKD: JORGAN 2012/12/17 APPR: SMILLER 2013/01/31	QUALITY SYMBOLS ▽=0 ▽=0 ▽=0	GENERAL TOLERANCES (UNLESS SPECIFIED)		DIMENSION STYLE <b>MM/IN</b>		SCALE	DESIGN UNITS	THIRD ANGLE PROJECTION			
		4 PLACES ± --- ± ---	3 PLACES ± --- ± .010	2 PLACES ± 0.25 ± .015	1 PLACE ± 0.38 ± ---	0 PLACE ± --- ± ---	mm	INCH	INCH	INCH	
		DRAWN BY: RAS CHECKED BY: MJM APPROVED BY: SMILLER		DATE: 1986/07/21 DATE: 1986/07/21 DATE: 2013/01/31		TITLE ASSEMBLY, CONNECTOR FFC FEMALE SINGLE ROW (2.54)/.100		DOCUMENT NO. <b>SDA-70430-0211-0234</b>		SHEET NO. 1 OF 1	
		ANGULAR ±1/2°		SEE TABLE		THIS DRAWING CONTAINS INFORMATION THAT IS PROPRIETARY TO MOLEX INCORPORATED AND SHOULD NOT BE USED WITHOUT WRITTEN PERMISSION		MOLEX		MOLEX	