

TABLE 1

No OF BANK	"A"	"B"	"C"
-01	.9125 [23.178]	.8125 [20.638]	N/A
-02	1.7000 [43.180]	1.6000 [40.640]	1
-03	2.4875 [63.183]	2.3875 [60.643]	2

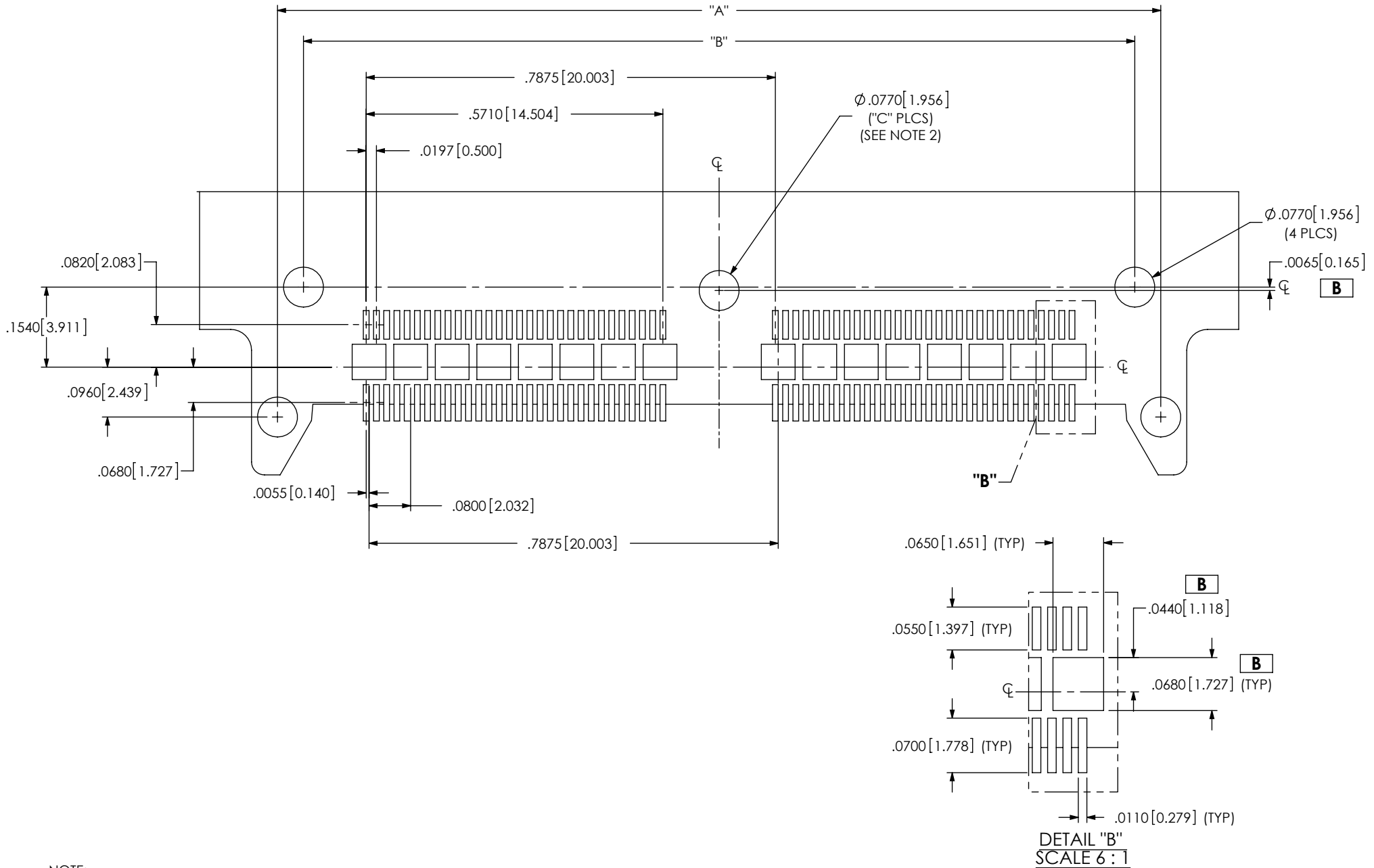
NOTES:

1. NOT REQUIRED FOR ONE BANK CONNECTOR.
2. ALL DIMENSIONS ARE SYMMETRIC ABOUT THE CENTERLINE.
3. TO BE SOLDERED USING PASTE-IN-HOLE TECHNOLOGY.

PROPRIETARY NOTE
 THIS DOCUMENT CONTAINS INFORMATION CONFIDENTIAL AND PROPRIETARY TO SAMTEC, INC. AND SHALL NOT BE REPRODUCED OR TRANSFERRED TO OTHER DOCUMENTS OR DISCLOSED TO OTHERS OR USED FOR ANY PURPOSE OTHER THAN THAT WHICH IT WAS OBTAINED WITHOUT THE EXPRESSED WRITTEN CONSENT OF SAMTEC, INC.



520 PARK EAST BLVD, NEW ALBANY, IN 47150
 PHONE: 812-944-6733 FAX: 812-948-5047
 e-Mail info@SAMTEC.com code 55322



NOTE:

- B** 1. STENCIL TO BE .0050[.127] THICK.
- 2. NOT REQUIRED FOR ONE BANK CONNECTOR.
- 3. ALL DIMENSIONS ARE SYMMETRIC ABOUT THE CENTERLINE.

PROPRIETARY NOTE
 THIS DOCUMENT CONTAINS INFORMATION CONFIDENTIAL AND PROPRIETARY TO SAMTEC, INC. AND SHALL NOT BE REPRODUCED OR TRANSFERRED TO OTHER DOCUMENTS OR DISCLOSED TO OTHERS OR USED FOR ANY PURPOSE OTHER THAN THAT WHICH IT WAS OBTAINED WITHOUT THE EXPRESSED WRITTEN CONSENT OF SAMTEC, INC.

samtec
 520 PARK EAST BLVD, NEW ALBANY, IN 47150
 PHONE: 812-944-6733 FAX: 812-948-5047
 e-Mail info@SAMTEC.com code 55322