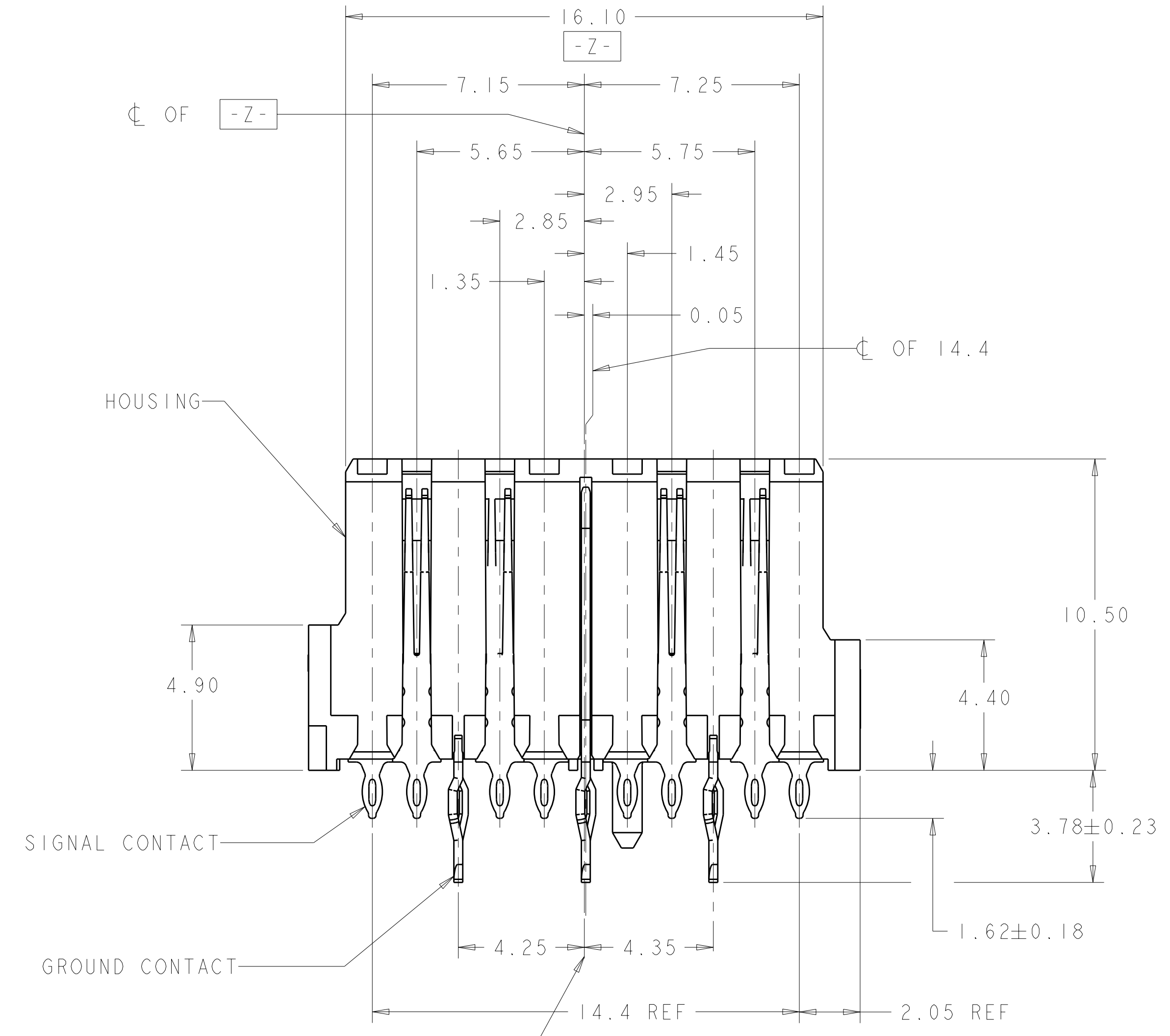
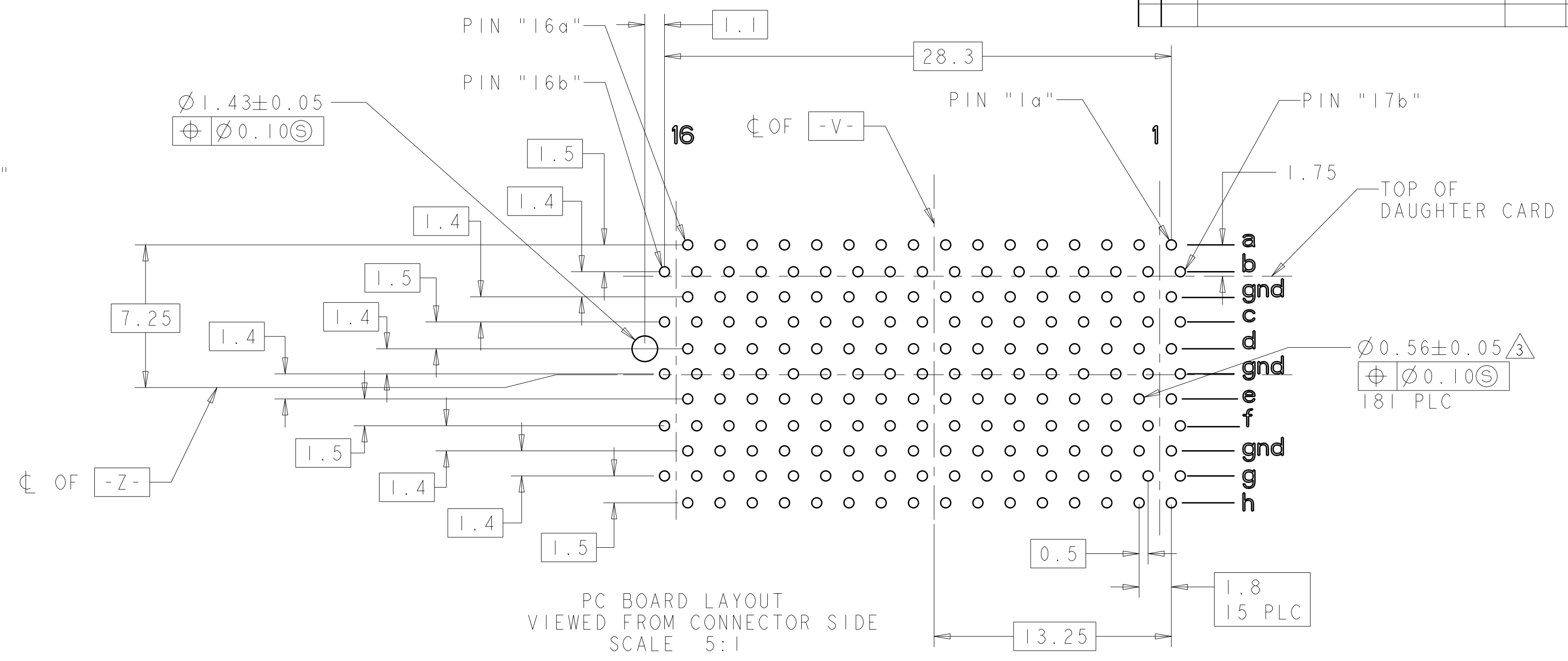
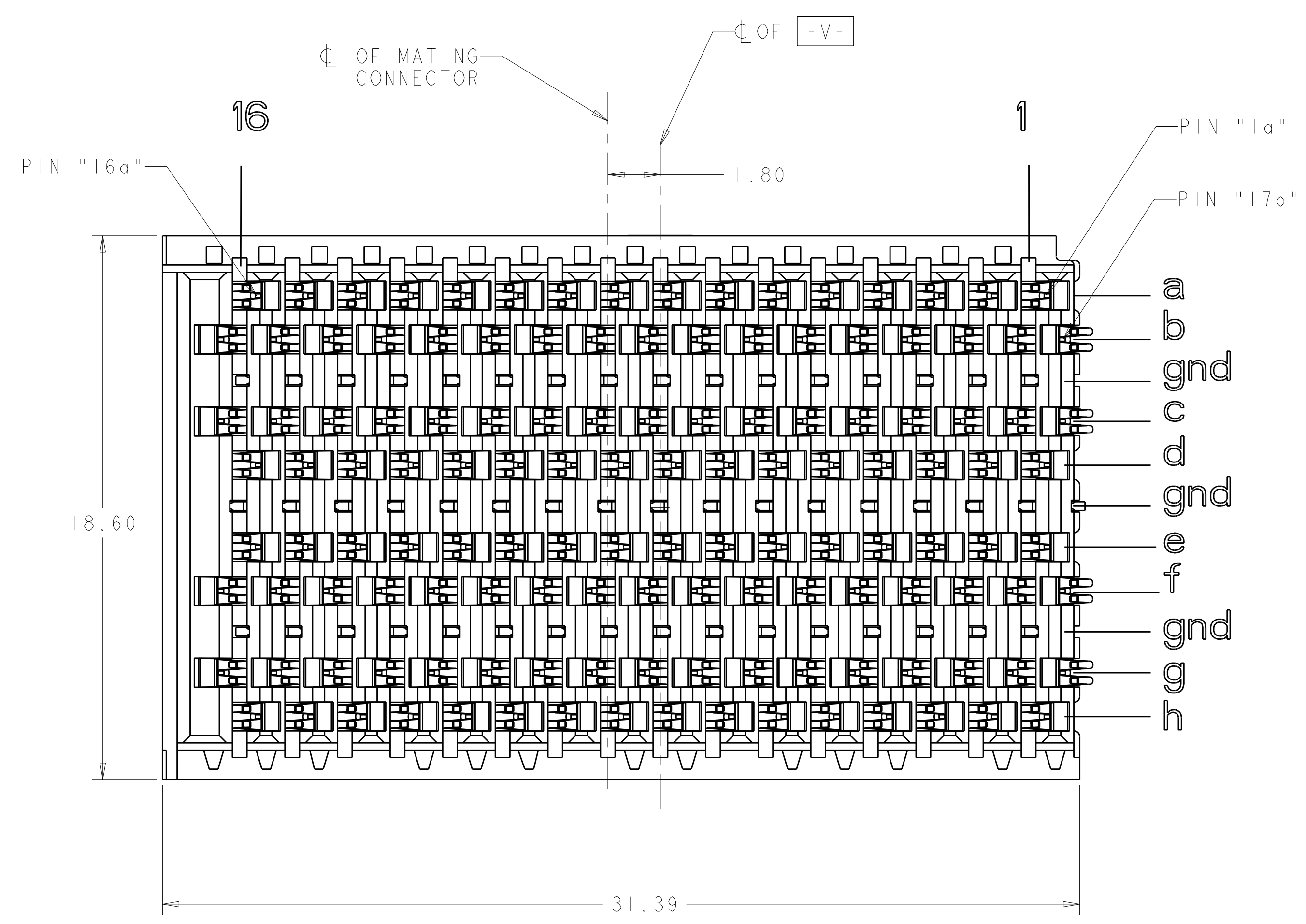


REVISONS		DATE	BY	APPD
A	EC 0512-0341-04	29JUL2004	BW	GG
B	REV PER ECO-11-003264	25AUG2011	RG	AS



- △ HOUSING: LCP, UL94V-0, BLACK. CONTACT: PHOSPHOR BRONZE.
- △ 1.27µm GOLD PER ASTM B 488 IN CONTACT AREA, 1.27µm MIN TIN-LEAD ON PCB TAIL, OVER 3.81µm MIN NICKEL PER SAE AMS-QQ-N-290 OVER ALL.
- △ 3 MANUFACTURING TOLERANCE FOR $\varnothing 0.56 \pm 0.05$ DIAMETER FINISHED HOLE: DRILLED HOLE: $\varnothing 0.65 \pm 0.02$ COPPER PLATING: 0.050 - 0.025 TIN-LEAD PLATING: 0.0124 - 0.0038.
- △ 4 1.27 µm GOLD PER ASTM B 488 IN CONTACT AREA, 1.27 µm MIN MATTE TIN PER ASTM B 545 ON PCB TAIL, OVER 3.81 µm MIN NICKEL PER SAE AMS-QQ-N-290 OVER ALL.
- △ 5 MANUFACTURING TOLERANCE FOR A $\varnothing 0.575 \pm 0.045$ FINISHED HOLE WITHOUT TIN LEAD PLATING: DRILLED HOLE: $\varnothing 0.65 \pm 0.02$ COPPER PLATING: 0.025 - 0.050

4	5	1410202-2
2	3	1410202-1
CONTACT TAIL/HOLE FINISH		PART NO

<small>THIS DRAWING IS UNPUBLISHED. RELEASED FOR PUBLICATION. BY TYCO ELECTRONICS CORPORATION, ALL RIGHTS RESERVED.</small>		DWN: TREA 30JAN2003 CHK: D.DEEIRAUGH 30JAN2003 APVD: D.DEEIRAUGH 30JAN2003	tyco Electronics Tyco Electronics Harrisburg, PA 17105-3608
DIMENSIONS: mm	TOLERANCES UNLESS OTHERWISE SPECIFIED: 9 PLC ± 1 PLC ±0.5 2 PLC ±0.13 3 PLC ± 4 PLC ± ANGLES ±1°	NAME: ASSEMBLY, VERTICAL RECEPTACLE, RIGHT END, FULL, 20.3mm, MultiGig RT-1, BACKPLANE CONNECTOR PRODUCT SPEC: 108-2072 APPLICATION SPEC: 114-13056	SIZE: A11 CAGE CODE: 00779 DRAWING NO: C=1410202 WEIGHT: - CUSTOMER DRAWING: -
MATERIAL:		FINISH:	SCALE: 8:1 SHEET: 1 OF 1 REV: B