

# Printed-circuit board connector - FKIC 2,5 HC/ 2-ST-5,08 - 1942594

Please be informed that the data shown in this PDF Document is generated from our Online Catalog. Please find the complete data in the user's documentation. Our General Terms of Use for Downloads are valid (<http://phoenixcontact.com/download>)

PCB connector, nominal current: 16 A, rated voltage (III/2): 320 V, number of positions: 2, pitch: 5.08 mm, connection method: Push-in spring connection, color: green, contact surface: Tin




The figure shows a 10-position version of the product

## Why buy this product

- Time saving push-in connection, tools not required
- Defined contact force ensures that contact remains stable over the long term
- Intuitive use through colour coded actuation lever
- Inverted connector with pin contacts for touch-proof device outputs or free-hanging cable/cable connections
- Optimized for tight installation situations: operation and conductor connection from one direction
- Quick and convenient testing using integrated test option



## Key Commercial Data

|              |   |
|--------------|---|
| Packing unit | 50 STK  |
| GTIN         | <br>4 017918 879112 |
| GTIN         | 4017918879112   |

## Technical data

### Dimensions

|              |          |
|--------------|----------|
| Length [ l ] | 27 mm    |
| Width [ w ]  | 12.16 mm |
| Height [ h ] | 15 mm    |
| Pitch        | 5.08 mm  |
| Dimension a  | 5.08 mm  |

### General

|                     |                   |
|---------------------|-------------------|
| Range of articles   | FKIC 2,5 HC/..-ST |
| Type of contact     | Male connector    |
| Number of positions | 2                 |

# Printed-circuit board connector - FKIC 2,5 HC/ 2-ST-5,08 - 1942594

## Technical data

### General

|  |   |
|--|---|
| Connection method                      | Push-in spring connection                                 |
| Insulating material group              | I   |
| Rated surge voltage (III/3)            | 4 kV  |
| Rated surge voltage (III/2)            | 4 kV  |
| Rated surge voltage (II/2)             | 4 kV  |
| Rated voltage (III/3)                  | 320 V   |
| Rated voltage (III/2)                  | 320 V   |
| Rated voltage (II/2)                   | 630 V   |
| Connection in acc. with standard       | EN-VDE  |
| Nominal current $I_N$                  | 16 A  |
| Nominal cross section                  | 2.5 mm <sup>2</sup>                                       |
| Maximum load current                   | 16 A (with a 2.5 mm <sup>2</sup> conductor cross section) |
| Insulating material                    | PA  |
| Flammability rating according to UL 94 | V0  |
| Internal cylindrical gage              | A2  |
| Stripping length                       | 10 mm   |

### Connection data

|   |                      |
|---|----------------------|
| Conductor cross section solid min.  | 0.2 mm <sup>2</sup>  |
| Conductor cross section solid max.  | 2.5 mm <sup>2</sup>  |
| Conductor cross section flexible min.   | 0.2 mm <sup>2</sup>  |
| Conductor cross section flexible max.   | 2.5 mm <sup>2</sup>  |
| Conductor cross section flexible, with ferrule without plastic sleeve min.              | 0.25 mm <sup>2</sup> |
| Conductor cross section flexible, with ferrule without plastic sleeve max.              | 2.5 mm <sup>2</sup>  |
| Conductor cross section flexible, with ferrule with plastic sleeve min.                 | 0.25 mm <sup>2</sup> |
| Conductor cross section flexible, with ferrule with plastic sleeve max.                 | 2.5 mm <sup>2</sup>  |
| Conductor cross section AWG min.  | 24                   |
| Conductor cross section AWG max.  | 12                   |
| 2 conductors with same cross section, stranded, TWIN ferrules with plastic sleeve, min. | 0.5 mm <sup>2</sup>  |
| 2 conductors with same cross section, stranded, TWIN ferrules with plastic sleeve, max. | 1.5 mm <sup>2</sup>  |
| Minimum AWG according to UL/CUL   | 26                   |
| Maximum AWG according to UL/CUL   | 12                   |

### Standards and Regulations

|  |        |
|--|--------|
| Connection in acc. with standard       | EN-VDE |
|  | CUL    |
| Flammability rating according to UL 94 | V0     |

### Environmental Product Compliance

|            |   |
|------------|---|
| China RoHS | Environmentally friendly use period: unlimited = EFUP-e |
|------------|---|

# Printed-circuit board connector - FKIC 2,5 HC/ 2-ST-5,08 - 1942594

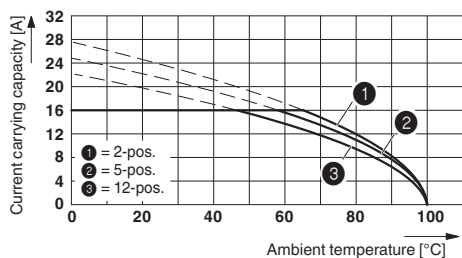
## Technical data

### Environmental Product Compliance

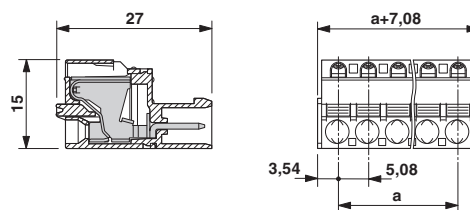
|  |  |
|--|--|
|  | No hazardous substances above threshold values |
|--|--|

## Drawings

Diagram



Dimensional drawing



Derating curve for: FKIC 2,5 HC/..-ST- 5,08 with IC 2,5 HC/..-G- 5,08

## Approvals

### Approvals

#### Approvals

VDE Gutachten mit Fertigungsüberwachung / IECCEB Scheme / EAC / cULus Recognized

#### Ex Approvals

### Approval details

|   |         |   |          |
|---|---------|---|----------|
| VDE Gutachten mit Fertigungsüberwachung |         | <a href="http://www2.vde.com/de/Institut/Online-Service/VDE-gepruefteProdukte/Seiten/Online-Suche.aspx">http://www2.vde.com/de/Institut/Online-Service/VDE-gepruefteProdukte/Seiten/Online-Suche.aspx</a> | 40004701 |
| Nominal voltage UN                      | 250 V   |   |          |
| Nominal current IN                      | 16 A    |   |          |
| mm <sup>2</sup> /AWG/kcmil              | 0.2-2.5 |   |          |


|                    |       |   |                |
|--------------------|-------|---|----------------|
| IECEE CB Scheme    |       | <a href="http://www.iecee.org/">http://www.iecee.org/</a> | DE1-58978-B1B2 |
| Nominal voltage UN | 250 V |   |                |
| Nominal current IN | 16 A  |   |                |

# Printed-circuit board connector - FKIC 2,5 HC/ 2-ST-5,08 - 1942594

## Approvals

|                            |         |
|----------------------------|---------|
|                            |         |
| mm <sup>2</sup> /AWG/kcmil | 0.2-2.5 |

|     |   |         |
|-----|---|---------|
| EAC |  | B.01742 |
|-----|---|---------|

|                            |   |   |                 |
|----------------------------|---|---|-----------------|
| cULus Recognized           |  | <a href="http://database.ul.com/cgi-bin/XYV/template/LISEXT/1FRAME/index.htm">http://database.ul.com/cgi-bin/XYV/template/LISEXT/1FRAME/index.htm</a> | E60425-19931011 |
|                            | D   | B   |                 |
| Nominal voltage UN         | 300 V   | 300 V   |                 |
| Nominal current IN         | 10 A  | 16 A  |                 |
| mm <sup>2</sup> /AWG/kcmil | 26-12   | 26-12   |                 |

Phoenix Contact 2018 © - all rights reserved  
<http://www.phoenixcontact.com>

PHOENIX CONTACT GmbH & Co. KG  
Flachsmarktstr. 8  
32825 Blomberg  
Germany  
Tel. +49 5235 300  
Fax +49 5235 3 41200  
<http://www.phoenixcontact.com>