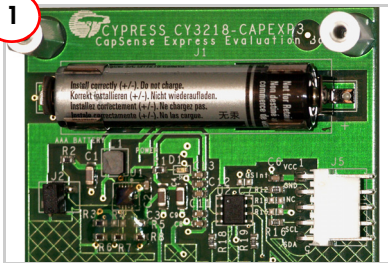


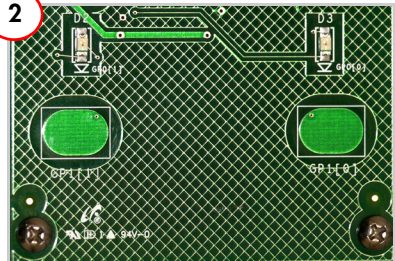
Demo#1: CapSense Express Evaluation Board Test

1



1. Insert the AAA battery.
2. Remove the Jumper from J2.
3. Observe that the Power LED lights up.

2



- Touch the CapSense Buttons to turn ON the respective LEDs.

3



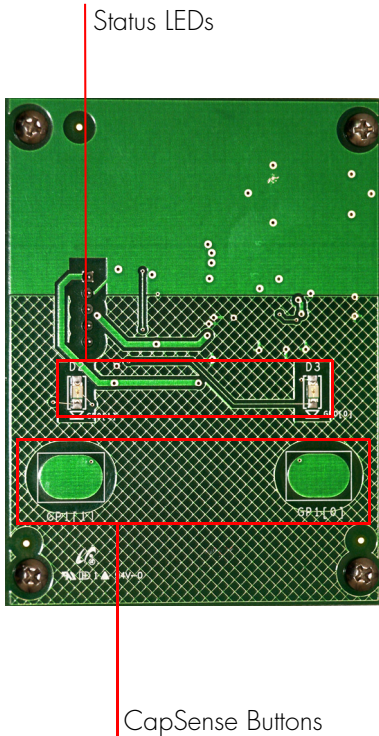
- Insert the kit CD and run the CD's autorun utility.

4

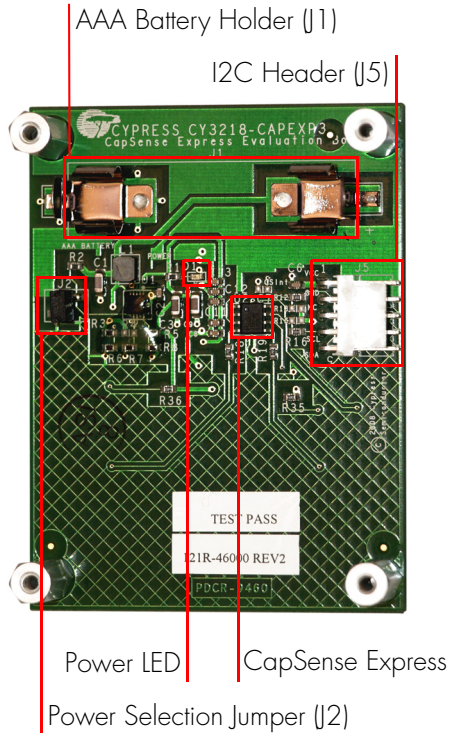


- Open the guide and install software.

Top View



Bottom View



For the latest information about this kit visit
www.cypress.com/go/CY3218-CAPEXP3

