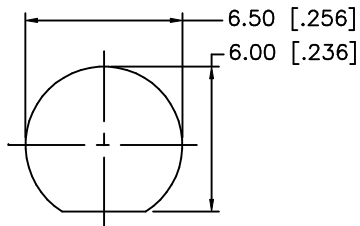
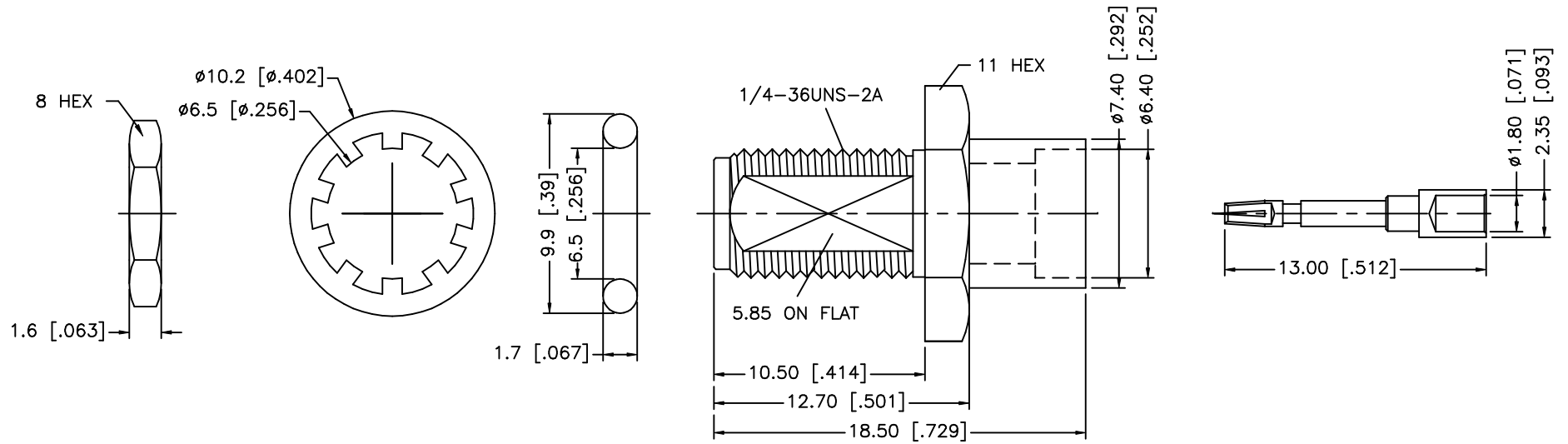
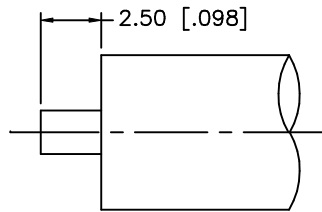


REV.	DATE	DESCRIPTION
NC	06/12/02	INITIAL RELEASE



RECOMMENDED MOUNTING HOLE



RECOMMENDED CABLE STRIPPING DIM'S

CRIMP NOTES:

1. SOLDER CENTER CONTACT
2. MAX. PANEL THICKNESS = 2.4mm

8				UNLESS OTHERWISE SPECIFIED DIMENSIONS ARE IN MILLIMETERS	APPROVALS	DATE	<h1>Amphenol - Connex</h1> <h2>CONNECTOR CORPORATION</h2>					
7			DIMENSIONS IN [] ARE IN INCHES FOR CUSTOMER REFERENCE ONLY		DRAWN	G.R.S.					06/12/02	
6	HEX NUT	BRASS			GOLD	CHECKED						
5	LOCK WASHER	BRASS			GOLD	ISSUED						
4	GASKET	RUBBER	RED	UNLESS OTHERWISE SPECIFIED TOLERANCES FOR INCHES ARE: .XXX = ± 0.005" .XX = ± 0.010" .X = ± 0.020"	TITLE		SMA DIRECT SOLDER BULKHEAD JACK (.250 SEMI RIGID CABLE)					
3	CONTACT PIN	BER. COPPER	GOLD		SIZE	FSCM NO.	DWG. NO.	REV.				
2	INSULATOR	TEFLON	NATURAL		A	99001	132346.DWG	NC				
1	BODY	BRASS	GOLD		SCALE	PART NO.	SHEET					
DESCRIPTION MATERIAL FINISH				DO NOT SCALE DRAWING	NA	132346	1 OF 1					